

SLC13A2 Rabbit pAb

货号: **AYP15977**

产品信息

反应	Human,Mouse,Rat
宿主	Rabbit
克隆性	Polyclonal
预测反应	
应用	WB
推荐浓度	WB: 1:500 - 1:2000
理论分子量	64kDa/69kDa
实测分子量	80kDa
形式	Liquid
保存条件	Store at -20°C. Avoid freeze / thaw cycles. Buffer: PBS with 0.02% sodium azide,50% glycerol,pH7.3.
偶联物	Unconjugated
阳性对照	293T,U-937,MCF7,Mouse kidney,Mouse liver,Rat kidney
细胞定位	Membrane,Multi-pass membrane protein
纯化	Affinity purification

抗原信息

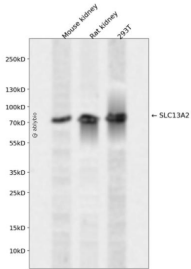
抗原信息	Recombinant fusion protein containing a sequence corresponding to amino acids 345-455 of human SLC13A2 (NP_003975.1).
序列	TREPGFFLGWGNLAFPNAGESMVS DGTVAIFIGIIMFIIPSKFPGLTQDPENPGK LKAPLGLLDWKT V NQKMPWNIVLLLG GGYALAKG SERSGLSEWLG NKL TPLQ SVP

靶点信息

研究背景	The protein encoded by this gene is a sodium-coupled citrate transporter that is regulated by the chaperone activity of cyclophilin b. The encoded protein may play a role in the formation of kidney stones.
基因ID	9058
基因名	SLC13A2

Swiss	Q13183
别名	SLC13A2;NADC1;NaCT;NaDC-1;SDCT1

产品验证



Western blot analysis of SLC13A2 expressed in Mouse kidney,Rat kidney,293T using SLC13A2 Rabbit p Ab at 1:1000. Secondary antibody: HRP Goat Anti-Rabbit IgG (H+L) at 1:5000. Lysates/proteins: 30ug per lane. Blocking buffer: 5% non-fat dry milk in TBST. Detection: ECL Enhanced Kit. Exposure time: 12 0s.

实验步骤

访问官网浏览详情: www.ablybio.cn