

TIMM17B Rabbit pAb

货号: **AYP15976**

产品信息

反应	Mouse
宿主	Rabbit
克隆性	Polyclonal
预测反应	
应用	WB
推荐浓度	WB: 1:500 - 1:2000
理论分子量	18kDa/23kDa
实测分子量	18kDa
形式	Liquid
保存条件	Store at -20°C. Avoid freeze / thaw cycles. Buffer: PBS with 0.02% sodium azide,50% glycerol,pH7.3.
偶联物	Unconjugated
阳性对照	Mouse heart
细胞定位	Mitochondrion inner membrane,Multi-pass membrane protein
纯化	Affinity purification

抗原信息

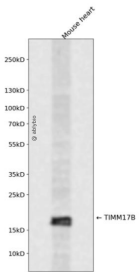
抗原信息	Recombinant fusion protein containing a sequence corresponding to amino acids 1-172 of human TIMM17 B (NP_005825.1).
序列	MEEYAREPCPWRIVDCCGGAFTMGVIGGGVFQAIKGFNRNAPVGIHRLRGSANAVRIRAPQIGGSFAVWGGLFSTIDCGLVRLRGKEDPWNSITSGALTGAVLAARSGPLAMVGSAMMGGILLALIEGVGILLTRYTAQQFRNAPPFLEDPSQLPPKDGTPAPGYPSYQQYH

靶点信息

研究背景	This gene encodes a multipass transmembrane protein that forms an integral component of the mitochondrial translocase TIM23 complex. This complex facilitates the transport of mitochondrial proteins from the cytosol across the mitochondrial inner membrane and into the mitochondrion. There is a pseudogene for this gene on chromosome 12. Alternative splicing results in multiple transcript variants.
基因ID	10245

基因名	TIMM17B
Swiss	O60830
别名	TIMM17B;DXS9822;JM3;TIM17B

产品验证



Western blot analysis of TIMM17B expressed in Mouse heart using TIMM17B Rabbit pAb at 1:1000. Secondary antibody: HRP Goat Anti-Rabbit IgG (H+L) at 1:5000. Lysates/proteins: 30ug per lane. Blocking buffer: 5% non-fat dry milk in TBST. Detection: ECL Enhanced Kit. Exposure time: 120s.

实验步骤

访问官网浏览详情: www.ablybio.cn