

# INADL Rabbit pAb

货号: **AYP15972**

## 产品信息

反应	Human,Mouse
宿主	Rabbit
克隆性	Polyclonal
预测反应	
应用	WB
推荐浓度	<b>WB:</b> 1:500 - 1:2000
理论分子量	125kDa/167kDa/170kDa/173kDa/196kDa
实测分子量	255kDa
形式	Liquid
保存条件	Store at -20°C. Avoid freeze / thaw cycles. Buffer: PBS with 0.01% thiomersal,50% glycerol,pH7.3.
偶联物	Unconjugated
阳性对照	SKOV3,SW480,293T,HeLa
细胞定位	Apical cell membrane,Cell junction,Cell membrane,Cytoplasm,Peripheral membrane protein,perinuclear region,tight junction
纯化	Affinity purification

## 抗原信息

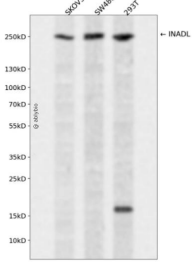
抗原信息	A synthetic peptide corresponding to a sequence within amino acids 1-100 of human INADL (NP_795352.2).
序列	MPENPATDKLQVLQVLDRLKMKLQEKGDTSQNEKLSMFYETLKSPLFNQILTLQSIKQLKGQLNHIPSDCSANFDFSRK GLLVFTDGSITNGNVHRPSN

## 靶点信息

研究背景	This gene encodes a protein with multiple PDZ domains. PDZ domains mediate protein-protein interactions, and proteins with multiple PDZ domains often organize multimeric complexes at the plasma membrane. This protein localizes to tight junctions and to the apical membrane of epithelial cells. A similar protein in Drosophila is a scaffolding protein which tethers several members of a multimeric signaling complex in photoreceptors.
------	---

基因ID	10207
基因名	
Swiss	Q8NI35
别名	PATJ;Cipp;INADL;InaD-like;hINADL

## 产品验证



Western blot analysis of INADL expressed in SKOV3, SW480, 293T using INADL Rabbit pAb at 1:1000. Secondary antibody: HRP Goat Anti-Rabbit IgG (H+L) at 1:5000. Lysates/proteins: 30ug per lane. Blocking buffer: 5% non-fat dry milk in TBST. Detection: ECL Enhanced Kit. Exposure time: 120s.

## 实验步骤

访问官网浏览详情: [www.ablybio.cn](http://www.ablybio.cn)