

ARHGEF3 Rabbit pAb

货号: **AYP15965**

产品信息

反应	Human,Mouse
宿主	Rabbit
克隆性	Polyclonal
预测反应	
应用	WB
推荐浓度	WB: 1:500 - 1:2000
理论分子量	36kDa/59kDa/60kDa/63kDa
实测分子量	60kDa
形式	Liquid
保存条件	Store at -20°C. Avoid freeze / thaw cycles. Buffer: PBS with 0.02% sodium azide,50% glycerol,pH7.3.
偶联物	Unconjugated
阳性对照	MCF7,HepG2
细胞定位	Cytoplasm
纯化	Affinity purification

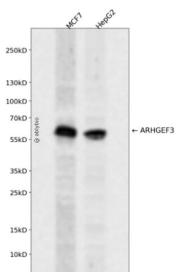
抗原信息

抗原信息	Recombinant fusion protein containing a sequence corresponding to amino acids 287-526 of human ARH GEF3 (NP_062455.1).
序列	LEEAINIIQGIVAEINTKTGESECRYKERLLYLEEGQKDSLIDSSRVLCCGELKNNRGVKLHVFLFQEVLVITRAVTHNEQLC YQLYRQPIPVKDLLLEDLQDGEVRLGGSLRGAFSNNERIKNFFRVSFKNGSQSQTHSLQANDTFNKQQWLNLCIRQAKETV LCAAGQAGVLDSEGSFLNPTTGSRELQGETKLEQMDQSDSESDCSMDTSEVSLDCERMEQTDSSCGNSRHGESNV

靶点信息

研究背景	Rho-like GTPases are involved in a variety of cellular processes, and they are activated by binding GTP and inactivated by conversion of GTP to GDP by their intrinsic GTPase activity. Guanine nucleotide exchange factors (GEFs) accelerate the GTPase activity of Rho GTPases by catalyzing their release of bound GDP. This gene encodes a guanine nucleotide exchange factor, which specifically activates two members of the Rho GTPase family: RHOA and RHOB, both of which have a role in bone cell biology. It has been identified that genetic variation in this gene plays a role in the determination of bone mineral density (BMD), indicating the implication of this gene in postmenopausal osteoporosis. Alternatively spliced transcript variants encoding different isoforms have been found for this gene.
基因ID	50650
基因名	ARHGEF3
Swiss	Q9NR81
别名	ARHGEF3;GEF3;STA3;XPLN

产品验证



Western blot analysis of ARHGEF3 expressed in MCF7, HepG2 using ARHGEF3 Rabbit pAb at 1:1000. Secondary antibody: HRP Goat Anti-Rabbit IgG (H+L) at 1:5000. Lysates/proteins: 30ug per lane. Blocking buffer: 5% non-fat dry milk in TBST. Detection: ECL Enhanced Kit. Exposure time: 120s.

实验步骤

访问官网浏览详情: www.ablybio.cn