

# SIGLEC12 Rabbit pAb

货号: **AYP15951**

## 产品信息

反应	Mouse
宿主	Rabbit
克隆性	Polyclonal
预测反应	
应用	WB
推荐浓度	<b>WB:</b> 1:500 - 1:2000
理论分子量	51kDa/64kDa
实测分子量	80kDa
形式	Liquid
保存条件	Store at -20°C. Avoid freeze / thaw cycles. Buffer: PBS with 0.02% sodium azide,50% glycerol,pH7.3.
偶联物	Unconjugated
阳性对照	Mouse spleen,Mouse heart
细胞定位	Membrane,Single-pass type I membrane protein
纯化	Affinity purification

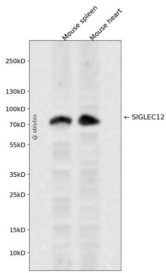
## 抗原信息

抗原信息	Recombinant fusion protein containing a sequence corresponding to amino acids 20-210 of human SIGLEC12 (NP_443729.1).
序列	EQKDYLTMQKSVTVQEGLCVSVLCSFSYPQNGWTASDPVHGYWFRAGDHVSRNIPVATNNPARAVQEETDRDFHLLG DPQNKDCTLSIRDTRSDAGTYVFCVERGNMKWNYKYDQLSVNVTASQDLLSRYRLEVPEVSVTVQEGLCVSVPCSVLYP HYNWTASSPVYGSWFKEGADIPWDIPVATNTPSG

## 靶点信息

研究背景	Sialic acid-binding immunoglobulin-like lectins (SIGLECs) are a family of cell surface proteins belonging to the immunoglobulin superfamily. They mediate protein-carbohydrate interactions by selectively binding to different sialic acid moieties present on glycolipids and glycoproteins. This gene encodes a member of the SIGLEC3-like subfamily of SIGLECs. Members of this subfamily are characterized by an extracellular V-set immunoglobulin-like domain followed by two C2-set immunoglobulin-like domains, and the cytoplasmic tyrosine-based motifs ITIM and SLAM-like. The encoded protein, upon tyrosine phosphorylation, has been shown to recruit the Src homology 2 domain-containing protein-tyrosine phosphatases SHP1 and SHP2. It has been suggested that the protein is involved in the negative regulation of macrophage signaling by functioning as an inhibitory receptor. This gene is located in a cluster with other SIGLEC3-like genes on 19q13.4. Alternative splicing results in multiple transcript variants.
基因ID	89858
基因名	SIGLEC12
Swiss	Q96PQ1
别名	SIGLEC12;S2V;SIGLECL1;SLG;Siglec-XII

## 产品验证



Western blot analysis of SIGLEC12 expressed in Mouse spleen, Mouse heart using SIGLEC12 Rabbit pAb at 1:1000. Secondary antibody: HRP Goat Anti-Rabbit IgG (H+L) at 1:5000. Lysates/proteins: 30ug per lane. Blocking buffer: 5% non-fat dry milk in TBST. Detection: ECL Enhanced Kit. Exposure time: 120s.

## 实验步骤

访问官网浏览详情: [www.ablybio.cn](http://www.ablybio.cn)