

GPRC6A Rabbit pAb

货号: **AYP15950**

产品信息

反应	Human,Mouse,Rat
宿主	Rabbit
克隆性	Polyclonal
预测反应	
应用	WB
推荐浓度	WB: 1:500 - 1:1000
理论分子量	84kDa/96kDa/104kDa
实测分子量	105KDa
形式	Liquid
保存条件	Store at -20°C. Avoid freeze / thaw cycles. Buffer: PBS with 0.05% proclin300,50% glycerol,pH7.3.
偶联物	Unconjugated
阳性对照	293T,Mouse lung,Mouse liver,Mouse spleen,Rat lung
细胞定位	Cell membrane,Multi-pass membrane protein
纯化	Affinity purification

抗原信息

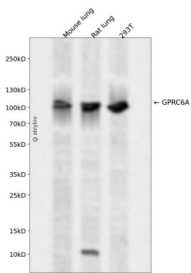
抗原信息	Recombinant fusion protein containing a sequence corresponding to amino acids 300-590 of human GPRC6A (NP_683766.2).
序列	IASDNWSTATKITTIPNVKIGKVVGFARFRGNISSFHSFLQNLHLLPSDSHKLLHEYAMHLSACAYVKDSDLSCIFNHSQ RTLAYKANKAIERNFVMRNDLWYAEPLIHSIQLAVFALGYAIRDLQCARDQNPNAFQPWELLGVLKNVTFDTGWNS FHFDAGDLNTGYDVLWKEINGHMTVTKMAEYDLQNDVFIIPDQETKNEFRNLKQIQSKCSKECSPGQMKTTRSQHIC CYECQNCPENHYTNQTDMPHCLLNNKTHWAPVRSTMCFEKEVEYLNWN

靶点信息

研究背景	Members of family C of the G protein-coupled receptor (GPCR) superfamily, such as GPRC6A, are characterized by an evolutionarily conserved amino acid-sensing motif linked to an intramembraneous 7-transmembrane loop region. Several members of GPCR family C, including GPRC6A, also have a long N-terminal domain (summary by Pi et al., 2005 [PubMed 16199532]).[supplied by OMIM, Nov 2010]
------	---

基因ID	222545
基因名	GPRC6A
Swiss	Q5T6X5
别名	GPRC6A;GPCR;bA86F4.3

产品验证



Western blot analysis of GPRC6A expressed in Mouse lung,Rat lung,293T using GPRC6A Rabbit pAb at 1:1000. Secondary antibody: HRP Goat Anti-Rabbit IgG (H+L) at 1:5000. Lysates/proteins: 30ug per lane. Blocking buffer: 5% non-fat dry milk in TBST. Detection: ECL Enhanced Kit. Exposure time: 120s.

实验步骤

访问官网浏览详情: www.ablybio.cn