

MTIF3 Rabbit pAb

货号: **AYP15949**

产品信息

| | |
|-------|--|
| 反应 | Human,Rat |
| 宿主 | Rabbit |
| 克隆性 | Polyclonal |
| 预测反应 | |
| 应用 | WB |
| 推荐浓度 | WB: 1:500 - 1:2000 |
| 理论分子量 | 31kDa |
| 实测分子量 | 32kDa |
| 形式 | Liquid |
| 保存条件 | Store at -20°C. Avoid freeze / thaw cycles. Buffer: PBS with 0.02% sodium azide,50% glycerol,pH7.3. |
| 偶联物 | Unconjugated |
| 阳性对照 | A-431,HeLa,HT-29 |
| 细胞定位 | Mitochondrion |
| 纯化 | Affinity purification |

抗原信息

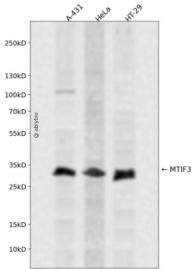
| | |
|------|--|
| 抗原信息 | Recombinant fusion protein containing a sequence corresponding to amino acids 1-278 of human MTIF3 (NP_690876.3). |
| 序列 | MAALFLKRLTLQTVKSENSCIRCFGKHILQKTAPAQLSPIASAPRLSFLIHAKAFSTAEDTQNEGKTKKKNKTAFSNVGRKIS QRVIHLFDEKGNLDLGNMHRANVIRLMDERDLRLVQRNTSTPEAEYQLMTGLQILQERQRLREMEKANPKTGPTLRKELILS SNIGQHDLDTKTQIQWIKKKHLVQITIKKGKNVDVSENEEIEFHQILQTMPIATFSSRPQAVQGGKALMCVLRFSK NEEKAYKETQETQERDTLNKDHGNDKESNVLHQ |

靶点信息

| | |
|------|---|
| 研究背景 | This gene encodes a translation initiation factor that is involved in mitochondrial protein synthesis. Polymorphism in this gene is associated with the onset of Parkinson's disease. Alternate splicing results in multiple transcript variants. A pseudogene of this gene is found on chromosome 5. |
| 基因ID | 219402 |

| | |
|-------|-------------|
| 基因名 | MTIF3 |
| Swiss | Q9H2K0 |
| 别名 | MTIF3;IF3mt |

产品验证



Western blot analysis of MTIF3 expressed in A-431, HeLa, HT-29 using MTIF3 Rabbit pAb at 1:1000. Secondary antibody: HRP Goat Anti-Rabbit IgG (H+L) at 1:5000. Lysates/proteins: 30ug per lane. Blocking buffer: 5% non-fat dry milk in TBST. Detection: ECL Enhanced Kit. Exposure time: 120s.

实验步骤

访问官网浏览详情: www.ablybio.cn