

RMI2 Rabbit pAb

货号: **AYP15948**

产品信息

反应	Human
宿主	Rabbit
克隆性	Polyclonal
预测反应	
应用	WB
推荐浓度	WB: 1:500 - 1:2000
理论分子量	9kDa/15kDa
实测分子量	16kDa
形式	Liquid
保存条件	Store at -20°C. Avoid freeze / thaw cycles. Buffer: PBS with 0.02% sodium azide, 50% glycerol, pH7.3.
偶联物	Unconjugated
阳性对照	HeLa, MCF7
细胞定位	Nucleus
纯化	Affinity purification

抗原信息

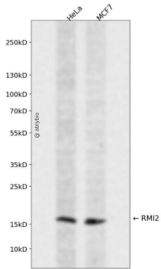
抗原信息	Recombinant fusion protein containing a sequence corresponding to amino acids 1-147 of human RMI2 (NP_689521.1).
序列	MAAAADSFSGGPAGVRLPRSPPLKVLAEQLRRDAEGGPGAWRLSRAAAGRGPLDLAAVWMQGRVVMADRGEARLRDP SGDFSVRGLERVPRGRPCLVPGKYVMVMGVVQACSPPECLQAVKMTDLSNPIHESMWELEVEDLHRNIP

靶点信息

研究背景	
基因ID	116028
基因名	RMI2

Swiss	Q96E14
别名	RMI2;BLAP18;C16orf75

产品验证



Western blot analysis of RMI2 expressed in HeLa, MCF7 using RMI2 Rabbit pAb at 1:1000. Secondary antibody: HRP Goat Anti-Rabbit IgG (H+L) at 1:5000. Lysates/proteins: 30ug per lane. Blocking buffer: 5% non-fat dry milk in TBST. Detection: ECL Enhanced Kit. Exposure time: 120s.

实验步骤

访问官网浏览详情: www.ablybio.cn