

CKAP5 Rabbit pAb

货号: **AYP15945**

产品信息

反应	Human,Mouse,Rat
宿主	Rabbit
克隆性	Polyclonal
预测反应	
应用	WB IF/ICC IP
推荐浓度	WB: 1:500 - 1:2000 IF/ICC: 1:50 - 1:200 IP: 1:500 - 1:1000
理论分子量	218kDa/225kDa/226kDa
实测分子量	250kDa
形式	Liquid
保存条件	Store at -20°C. Avoid freeze / thaw cycles. Buffer: PBS with 0.02% sodium azide,50% glycerol,pH7.3.
偶联物	Unconjugated
阳性对照	HeLa,Jurkat,HepG2,HT-29,Mouse brain,Mouse lung,Mouse liver,Rat brain
细胞定位	Cytoplasm,centrosome,cytoskeleton,microtubule organizing center,spindle pole
纯化	Affinity purification

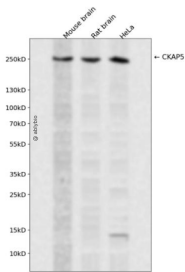
抗原信息

抗原信息	Recombinant fusion protein containing a sequence corresponding to amino acids 1763-2032 of human CKAP5 (NP_001008938.1).
序列	LLHTLCKLKGPKILDHLTMIDNKNSELEAHLCRMMKHSMQDTGSKSDKETEKGASRIDEKSSKAKVNDFLAEIFKKIGSKE NTKEGLAELYEYKKKYSDADIEPFLKNSSQFFQSYVERGLRVIEMEREGKGRISTSTGISPQMEVTCVPTPTSTVSSIGNTNG EEVGPSVYLERLKILRQRCGLDNTKQDDRPPLTSLLSKPAVPTVASSTDMLHSKLSQLRESREQHQHSDLDSNQTHSSGT VTSSSSTANIDDLKKRLERIKSSRK

靶点信息

研究背景	This gene encodes a cytoskeleton-associated protein which belongs to the TOG/XMAP215 family. The N-terminal half of this protein contains a microtubule-binding domain and the C-terminal half contains a KXGS motif for binding tubulin dimers. This protein has two distinct roles in spindle formation; it protects kinetochore microtubules from depolymerization and plays an essential role in centrosomal microtubule assembly. This protein may be necessary for the proper interaction of microtubules with the cell cortex for directional cell movement. It also plays a role in translation of the myelin basic protein (MBP) mRNA by interacting with heterogeneous nuclear ribonucleoprotein (hnRNP) A2, which associates with MBP. Alternatively spliced transcript variants encoding different isoforms have been identified.
基因ID	9793
基因名	CKAP5
Swiss	Q14008
别名	CKAP5;CHTOG;MSPS;TOG;TOGp;ch-TOG

产品验证



Western blot analysis of CKAP5 expressed in Mouse brain,Rat brain,HeLa using CKAP5 Rabbit pAb at 1:1000. Secondary antibody: HRP Goat Anti-Rabbit IgG (H+L) at 1:5000. Lysates/proteins: 30ug per lane. Blocking buffer: 5% non-fat dry milk in TBST. Detection: ECL Enhanced Kit. Exposure time: 120s.

实验步骤

访问官网浏览详情: www.ablybio.cn