

# MS4A2 Rabbit pAb

货号: **AYP15944**

## 产品信息

反应	Human
宿主	Rabbit
克隆性	Polyclonal
预测反应	
应用	WB
推荐浓度	<b>WB:</b> 1:500 - 1:2000
理论分子量	26kDa
实测分子量	27kDa
形式	Liquid
保存条件	Store at -20°C. Avoid freeze / thaw cycles. Buffer: PBS with 0.02% sodium azide, 50% glycerol, pH7.3.
偶联物	Unconjugated
阳性对照	HL-60, Raji
细胞定位	Membrane, Multi-pass membrane protein
纯化	Affinity purification

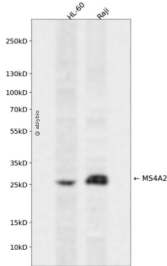
## 抗原信息

抗原信息	A synthetic peptide corresponding to a sequence within amino acids 1-100 of human MS4A2 (NP_000130.1).
序列	MDTESNRRANLALPQEPSSVPAFEVLEISPQEVSSGRLLKSASSPPLHTWLTVLKKEQEF LGVTQILTAMICLCFGTVVCSVL DISHIEGDIFSSFKAGY

## 靶点信息

研究背景	The allergic response involves the binding of allergen to receptor-bound IgE followed by cell activation and the release of mediators responsible for the manifestations of allergy. The IgE-receptor, a tetramer composed of an alpha, beta, and 2 disulfide-linked gamma chains, is found on the surface of mast cells and basophils. This gene encodes the beta subunit of the high affinity IgE receptor which is a member of the membrane-spanning 4A gene family. Members of this nascent protein family are characterized by common structural features and similar intron/exon splice boundaries and display unique expression patterns among hematopoietic cells and nonlymphoid tissues. This family member is localized to 11q12, among a cluster of membrane-spanning 4A gene family members. Alternative splicing results in multiple transcript variants encoding distinct proteins. Additional transcript variants have been described but require experimental validation.
基因ID	2206
基因名	MS4A2
Swiss	Q01362
别名	MS4A2;APY;ATOPY;FCER1B;FCERI;IGEL;IGER;IGHER;MS4A1

## 产品验证



Western blot analysis of MS4A2 expressed in HL-60, Raji using MS4A2 Rabbit pAb at 1:1000. Secondary antibody: HRP Goat Anti-Rabbit IgG (H+L) at 1:5000. Lysates/proteins: 30ug per lane. Blocking buffer: 5% non-fat dry milk in TBST. Detection: ECL Enhanced Kit. Exposure time: 120s.

## 实验步骤

访问官网浏览详情: [www.ablybio.cn](http://www.ablybio.cn)