

MYL6 Rabbit pAb

货号: **AYP15940**

产品信息

反应	Human,Mouse
宿主	Rabbit
克隆性	Polyclonal
预测反应	
应用	WB
推荐浓度	WB: 1:500 - 1:2000
理论分子量	16kDa
实测分子量	14kDa
形式	Liquid
保存条件	Store at -20°C. Avoid freeze / thaw cycles. Buffer: PBS with 0.02% sodium azide,50% glycerol,pH7.3.
偶联物	Unconjugated
阳性对照	HeLa,HepG2
细胞定位	cytosol,extracellular exosome
纯化	Affinity purification

抗原信息

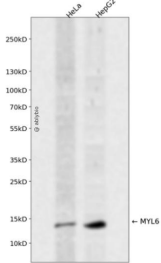
抗原信息	Recombinant fusion protein containing a sequence corresponding to amino acids 1-151 of human MYL6 (NP_066299.2).
序列	MCDFTEDQTAEFKEAFQLFDRTGDGKILYSQCGDVMRALGQNPTNAEVLKVLGNPKSDEMNVKVLDFEHFLPMLQTVAK NKDQGTIEDYVEGLRVFDKEGNGTVMGAEIRHVLVTLGEKMTEEEVEMLVAGHEDSNGCINYEAFVRHILSG

靶点信息

研究背景	Myosin is a hexameric ATPase cellular motor protein. It is composed of two heavy chains, two nonphosphorylatable alkali light chains, and two phosphorylatable regulatory light chains. This gene encodes a myosin in alkali light chain that is expressed in smooth muscle and non-muscle tissues. Genomic sequences representing several pseudogenes have been described and two transcript variants encoding different isoforms have been identified for this gene.
基因ID	4637

基因名	MYL6
Swiss	P60660
别名	MYL6;ESMLC;LC17;LC17-GI;LC17-NM;LC17A;LC17B;MLC-3;MLC1SM;MLC3NM;MLC3SM

产品验证



Western blot analysis of MYL6 expressed in HeLa, HepG2 using MYL6 Rabbit pAb at 1:1000. Secondary antibody: HRP Goat Anti-Rabbit IgG (H+L) at 1:5000. Lysates/proteins: 30ug per lane. Blocking buffer: 5% non-fat dry milk in TBST. Detection: ECL Enhanced Kit. Exposure time: 120s.

实验步骤

访问官网浏览详情: www.ablybio.cn