

GNE Rabbit pAb

货号: **AYP15933**

产品信息

反应	Human,Mouse,Rat
宿主	Rabbit
克隆性	Polyclonal
预测反应	
应用	WB IHC
推荐浓度	WB: 1:500 - 1:2000 IHC: 1:50 - 1:100
理论分子量	66kDa/71kDa/78kDa/79kDa/83kDa
实测分子量	79kDa
形式	Liquid
保存条件	Store at -20°C. Avoid freeze / thaw cycles. Buffer: PBS with 0.02% sodium azide,50% glycerol,pH7.3.
偶联物	Unconjugated
阳性对照	LO2,Jurkat,HeLa,mouse liver,rat liver
细胞定位	Cytoplasm
纯化	Affinity purification

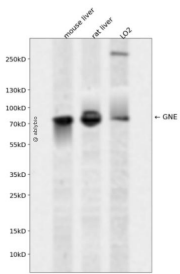
抗原信息

抗原信息	Recombinant fusion protein containing a sequence corresponding to amino acids 1-150 of human GNE (NP_001121699.1).
序列	METYGYLQRESCFQGPHELYFKNLSKRKNQIMEKNGNNRKLRCVATCNRADYSKLAPIMFGIKTEPEFFELDVVVLGSHLIDDYGNTYRMIEQDDFDINTRLHTIVRGEDEAAMVESVGLALVKLPDVLNRLKPDIMIVHGDRFDALAL

靶点信息

研究背景	The protein encoded by this gene is a bifunctional enzyme that initiates and regulates the biosynthesis of N-acetylneuraminic acid (NeuAc), a precursor of sialic acids. It is a rate-limiting enzyme in the sialic acid biosynthetic pathway. Sialic acid modification of cell surface molecules is crucial for their function in many biologic processes, including cell adhesion and signal transduction. Differential sialylation of cell surface molecules is also implicated in the tumorigenicity and metastatic behavior of malignant cells. Mutations in this gene are associated with sialuria, autosomal recessive inclusion body myopathy, and Nonaka myopathy. Alternative splicing of this gene results in transcript variants encoding different isoforms.
基因ID	10020
基因名	GNE
Swiss	Q9Y223
别名	GNE;DMRV;GLCNE;IBM2;NM;Uae1

产品验证



Western blot analysis of GNE expressed in mouse liver, rat liver, LO2 using GNE Rabbit pAb at 1:1000. Secondary antibody: HRP Goat Anti-Rabbit IgG (H+L) at 1:5000. Lysates/proteins: 30ug per lane. Blocking buffer: 5% non-fat dry milk in TBST. Detection: ECL Enhanced Kit. Exposure time: 120s.

实验步骤

访问官网浏览详情: www.ablybio.cn