

# SART1 Rabbit pAb

货号: **AYP15932**

## 产品信息

反应	Human,Mouse,Rat
宿主	Rabbit
克隆性	Polyclonal
预测反应	
应用	WB IHC IP
推荐浓度	<b>WB:</b> 1:500 - 1:2000 <b>IHC:</b> 1:50 - 1:200 <b>IP:</b> 1:20 - 1:50
理论分子量	90kDa
实测分子量	120kDa
形式	Liquid
保存条件	Store at -20°C. Avoid freeze / thaw cycles. Buffer: PBS with 0.02% sodium azide,50% glycerol,pH7.3.
偶联物	Unconjugated
阳性对照	HeLa,Jurkat,HepG2,Mouse liver,Mouse brain,Mouse testis,Rat brain
细胞定位	Nucleus
纯化	Affinity purification

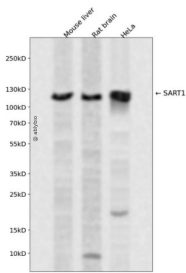
## 抗原信息

抗原信息	Recombinant fusion protein containing a sequence corresponding to amino acids 1-255 of human SART1 (NP_005137.1).
序列	MGSSKKHRGEKEAAGTTAAAGTGGATEQPPRHREHKHKHRSGGSGSGGERRKRSRERGGERGSGRRGAEAEARS STHGRERSQAEPSEERRVKREKRDDGYEAAASSKTSSGDASSLSIETNKLRAKLGKPLEVNAIKKEAGTKEEPVTADVINP MALRQREELREKLAAAKEKRLLNQKLGKIKTLGEDDPWLDDTAAWIERSRQLQKEKDLAEKRAKLEEMDQEFVSTLVE EEFGQRRQDLYSARDLQ

## 靶点信息

研究背景	This gene encodes two proteins, the SART1(800) protein expressed in the nucleus of the majority of proliferating cells, and the SART1(259) protein expressed in the cytosol of epithelial cancers. The SART1(259) protein is translated by the mechanism of -1 frameshifting during posttranscriptional regulation; its full-length sequence is not published yet. The two encoded proteins are thought to be involved in the regulation of proliferation. Both proteins have tumor-rejection antigens. The SART1(259) protein possesses tumor epitopes capable of inducing HLA-A2402-restricted cytotoxic T lymphocytes in cancer patients. This SART1(259) antigen may be useful in specific immunotherapy for cancer patients and may serve as a paradigmatic tool for the diagnosis and treatment of patients with atopy. The SART1(259) protein is found to be essential for the recruitment of the tri-snRNP to the pre-spliceosome in the spliceosome assembly pathway.
基因ID	9092
基因名	SART1
Swiss	O43290
别名	SART1;Ara1;HOMS1;SART1259;SNRNP110;Snu66;HAF

## 产品验证



Western blot analysis of SART1 expressed in Mouse liver,Rat brain,HeLa using SART1 Rabbit pAb at 1:1000. Secondary antibody: HRP Goat Anti-Rabbit IgG (H+L) at 1:5000. Lysates/proteins: 30ug per lane. Blocking buffer: 5% non-fat dry milk in TBST. Detection: ECL Enhanced Kit. Exposure time: 120s.

## 实验步骤

访问官网浏览详情: [www.ablybio.cn](http://www.ablybio.cn)