

# DHX30 Rabbit pAb

货号: **AYP15929**

## 产品信息

反应	Human,Mouse,Rat
宿主	Rabbit
克隆性	Polyclonal
预测反应	
应用	WB
推荐浓度	<b>WB:</b> 1:500 - 1:2000
理论分子量	129kDa/133kDa/136kDa
实测分子量	129kDa
形式	Liquid
保存条件	Store at -20°C. Avoid freeze / thaw cycles. Buffer: PBS with 0.02% sodium azide,50% glycerol,pH7.3.
偶联物	Unconjugated
阳性对照	HeLa,Jurkat,LO2,MCF7,Mouse eye,Mouse brain,Rat brain
细胞定位	Cytoplasm,Mitochondrion,Mitochondrion matrix,mitochondrion nucleoid
纯化	Affinity purification

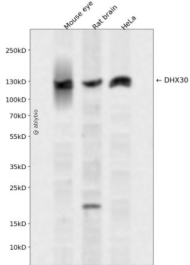
## 抗原信息

抗原信息	Recombinant fusion protein containing a sequence corresponding to amino acids 906-1155 of human DHX30 (NP_055781.2).
序列	GWEEVLRWQDRSSRENYLEENLLYAPSLRFIHGLIKQFSENIYEAFVLGKPSDCTLASAQCNEYSEEEELVKGVLMAGLYPNLIQVRQGVTRQKFKPNSVTYRTKSGNILLHKSTINREATRLRSRWLTYFMAVKSNGSVFVRDSSQVHPLAVLLLTGDVHIRDDGRRATISLSDSLLRLEGDSRTVRLKELRRALGRMVERSLRSELAALPPSVQEEHGQLLALLAELLRGPCGSFDVKTADD

## 靶点信息

研究背景	DEAD box proteins, characterized by the conserved motif Asp-Glu-Ala-Asp (DEAD), are putative RNA helicases. They are implicated in a number of cellular processes involving alteration of RNA secondary structure such as translation initiation, nuclear and mitochondrial splicing, and ribosome and spliceosome assembly. Based on their distribution patterns, some members of this DEAD box protein family are believed to be involved in embryogenesis, spermatogenesis, and cellular growth and division. The family member encoded by this gene is a mitochondrial nucleoid protein that associates with mitochondrial DNA. It has also been identified as a component of a transcriptional repressor complex that functions in retinal development, and it is required to optimize the function of the zinc-finger antiviral protein. Alternatively spliced transcript variants have been found for this gene.
基因ID	22907
基因名	DHX30
Swiss	Q7L2E3
别名	DHX30;DDX30;RETCOR

## 产品验证



Western blot analysis of DHX30 expressed in Mouse eye, Rat brain, HeLa using DHX30 Rabbit pAb at 1:1000. Secondary antibody: HRP Goat Anti-Rabbit IgG (H+L) at 1:5000. Lysates/proteins: 30ug per lane. Blocking buffer: 5% non-fat dry milk in TBST. Detection: ECL Enhanced Kit. Exposure time: 120s.

## 实验步骤

访问官网浏览详情: [www.ablybio.cn](http://www.ablybio.cn)