

CIRH1A Rabbit pAb

货号: **AYP15922**

产品信息

反应	Human,Mouse
宿主	Rabbit
克隆性	Polyclonal
预测反应	
应用	WB
推荐浓度	WB: 1:500 - 1:2000
理论分子量	64kDa/69kDa/76kDa
实测分子量	77kDa
形式	Liquid
保存条件	Store at -20°C. Avoid freeze / thaw cycles. Buffer: PBS with 0.02% sodium azide,50% glycerol,pH7.3.
偶联物	Unconjugated
阳性对照	U-251MG,HeLa,HT-1080,K-562,Mouse liver
细胞定位	Nucleus,nucleolus
纯化	Affinity purification

抗原信息

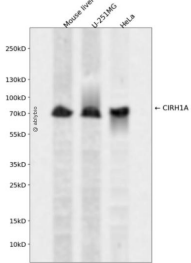
抗原信息	Recombinant fusion protein containing a sequence corresponding to amino acids 497-686 of human CIRH 1A (NP_116219.2).
序列	NWLAASGTSAGVHVYNVKQLKLHCTVPAYNFPVTAMAIAPNTNNLVIAHSDQQVFEYSIPDKQYTDWSRTVQKQGFHHLWLQRDTPITHISFHPKRPMHILLHDAYMFCIIDKSLPLPNDKTLLYNPFPTNESDVIRRRTAHAFKISKIYKPLLFMDLLDERTLVAVERPLDDIIAQLPPPIKKKKFGT

靶点信息

研究背景	This gene encodes a WD40-repeat-containing protein that is localized to the nucleolus. Mutation of this gene causes North American Indian childhood cirrhosis, a severe intrahepatic cholestasis that results in transient neonatal jaundice, and progresses to periportal fibrosis and cirrhosis in childhood and adolescence . Alternative splicing results in multiple transcript variants.
基因ID	84916

基因名	UTP4
Swiss	Q969X6
别名	UTP4;CIRH1A;CIRHIN;NAIC;TEX292

产品验证



Western blot analysis of CIRH1A expressed in Mouse liver,U-251MG,HeLa using CIRH1A Rabbit pAb at 1:1000. Secondary antibody: HRP Goat Anti-Rabbit IgG (H+L) at 1:5000. Lysates/proteins: 30ug per lane . Blocking buffer: 5% non-fat dry milk in TBST. Detection: ECL Enhanced Kit. Exposure time: 120s.

实验步骤

访问官网浏览详情: www.ablybio.cn