

TMC1 Rabbit pAb

货号: **AYP15920**

产品信息

反应	Human,Mouse,Rat
宿主	Rabbit
克隆性	Polyclonal
预测反应	
应用	WB IHC
推荐浓度	WB: 1:500 - 1:2000 IHC: 1:50 - 1:200
理论分子量	87kDa
实测分子量	88kDa
形式	Liquid
保存条件	Store at -20°C. Avoid freeze / thaw cycles. Buffer: PBS with 0.02% sodium azide,50% glycerol,pH7.3.
偶联物	Unconjugated
阳性对照	Mouse eye
细胞定位	Membrane,Multi-pass membrane protein
纯化	Affinity purification

抗原信息

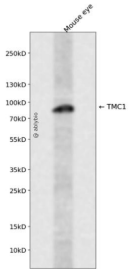
抗原信息	A synthetic peptide corresponding to a sequence within amino acids 600-700 of human TMC1 (NP_61963 6.2).
序列	INILRLHTSMYFQCWAVMCCNVPEARVFKASRSNNFYLGMLLLILFLSTMPVLYMIVSLPPSFDGPFSGKNRMFEVIGETLE HDFPSWMAKILRQLSNPG

靶点信息

研究背景	This gene is considered a member of a gene family predicted to encode transmembrane proteins. The specific function of this gene is unknown; however, it is known to be required for normal function of cochlear hair cells. Mutations in this gene have been associated with progressive postlingual hearing loss and profound prelingual deafness.
基因ID	117531

基因名	TMC1
Swiss	Q8TDI8
别名	TMC1;DFNA36;DFNB11;DFNB7

产品验证



Western blot analysis of TMC1 expressed in Mouse eye using TMC1 Rabbit pAb at 1:1000. Secondary antibody: HRP Goat Anti-Rabbit IgG (H+L) at 1:5000. Lysates/proteins: 30ug per lane. Blocking buffer: 5% non-fat dry milk in TBST. Detection: ECL Enhanced Kit. Exposure time: 120s.

实验步骤

访问官网浏览详情: www.ablybio.cn