

GMFB Rabbit pAb

货号: **AYP15908**

产品信息

反应	Human,Mouse,Rat
宿主	Rabbit
克隆性	Polyclonal
预测反应	
应用	WB IF/ICC
推荐浓度	WB: 1:200 - 1:2000 IF/ICC: 1:50 - 1:200
理论分子量	16kDa
实测分子量	17kDa
形式	Liquid
保存条件	Store at -20°C. Avoid freeze / thaw cycles. Buffer: PBS with 0.02% sodium azide,50% glycerol,pH7.3.
偶联物	Unconjugated
阳性对照	LO2,U-87MG,MCF7,Mouse brain,Mouse kidney,Mouse liver,Rat kidney
细胞定位	
纯化	Affinity purification

抗原信息

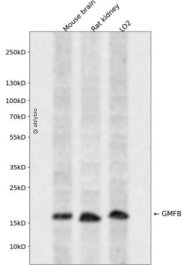
抗原信息	Recombinant fusion protein containing a sequence corresponding to amino acids 1-140 of human GMFB (NP_004115.1).
序列	MSESLVVCDAEDLVEKLRKFRFRKETNNAIIMKIDKDKRLVVLDEELEGISPDELKDELPERQPRFIVYSYKYQHDDGRVSYPLCFIFSSPVGCKPEQMMYAGSKNKL VQTAELTKVFEIRNTEDLTEEWLREKLG F

靶点信息

研究背景	GMFB is a nerve growth factor which belongs to the actin-binding proteins ADF family, GMF subfamily.GMFB is involved in nervous system development, angiogenesis and immune function. It is especially crucial for the nervous system. GMFB causes brain cell differentiation, stimulates neural regeneration and inhibit s tumor cell proliferation. GMFB overexpression in astrocytes results in the increase of BDNF production.
基因ID	2764

基因名	GMFB
Swiss	P60983
别名	GMFB;GMF

产品验证



Western blot analysis of GMFB expressed in Mouse brain,Rat kidney,LO2 using GMFB Rabbit pAb at 1:1000. Secondary antibody: HRP Goat Anti-Rabbit IgG (H+L) at 1:5000. Lysates/proteins: 30ug per lane. Blocking buffer: 5% non-fat dry milk in TBST. Detection: ECL Enhanced Kit. Exposure time: 120s.

实验步骤

访问官网浏览详情: www.ablybio.cn