

# FERMT2 Rabbit pAb

货号: **AYP15904**

## 产品信息

反应	Human,Mouse,Rat
宿主	Rabbit
克隆性	Polyclonal
预测反应	
应用	WB IHC
推荐浓度	<b>WB:</b> 1:1000 - 1:2000 <b>IHC:</b> 1:100 - 1:500
理论分子量	72kDa/77kDa/78kDa
实测分子量	78kDa
形式	Liquid
保存条件	Store at -20°C. Avoid freeze / thaw cycles. Buffer: PBS with 0.02% sodium azide,50% glycerol,pH7.3.
偶联物	Unconjugated
阳性对照	A-549,HT-29,LO2,MCF7,HT-1080,Mouse liver
细胞定位	Cell junction,Cell projection,Cell surface,Cytoplasm,Cytoplasmic side,I band,Membrane,Nucleus,Peripheral membrane protein,cell cortex,cytoskeleton,focal adhesion,lamellipodium membrane,myofibril,sarcomere
纯化	Affinity purification

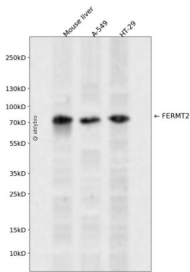
## 抗原信息

抗原信息	Recombinant fusion protein containing a sequence corresponding to amino acids 380-550 of human FERMT2 (NP_006823.1).
序列	KVFKPKKLTCLKGYKQYWCTFKDTSISCYKSKEESSGTPAHQMNLRGCEVTPDVNISGQKFNIKLLIPVAEGMNEIWLRCDEKQYAHWMAACRLASKGKTMADSSYNLEVQNILSFLKMQHLNPDQLIPEQITTDITPECLVSPRYLKKYKNKQITARILEAHQNVAQMS

## 靶点信息

研究背景	Scaffolding protein that enhances integrin activation mediated by TLN1 and/or TLN2, but activates integrins only weakly by itself. Binds to membranes enriched in phosphoinositides. Enhances integrin-mediated cell adhesion onto the extracellular matrix and cell spreading; this requires both its ability to interact with integrins and with phospholipid membranes. Required for the assembly of focal adhesions. Participates in the connection between extracellular matrix adhesion sites and the actin cytoskeleton and also in the orchestration of actin assembly and cell shape modulation. Recruits FBLIM1 to focal adhesions. Plays a role in the TGFB1 and integrin signaling pathways. Stabilizes active CTNNB1 and plays a role in the regulation of transcription mediated by CTNNB1 and TCF7L2/TCF4 and in Wnt signaling.
基因ID	10979
基因名	FERMT2
Swiss	Q96AC1
别名	FERMT2;KIND2;MIG2;PLEKHC1;UNC112;UNC112B;mig-2

## 产品验证



Western blot analysis of FERMT2 expressed in Mouse liver,A-549,HT-29 using FERMT2 Rabbit pAb at 1:1000. Secondary antibody: HRP Goat Anti-Rabbit IgG (H+L) at 1:5000. Lysates/proteins: 30ug per lane. Blocking buffer: 5% non-fat dry milk in TBST. Detection: ECL Enhanced Kit. Exposure time: 120s.

## 实验步骤

访问官网浏览详情: [www.ablybio.cn](http://www.ablybio.cn)