

SIX2 Rabbit pAb

货号: **AYP15895**

产品信息

反应	Human,Rat
宿主	Rabbit
克隆性	Polyclonal
预测反应	
应用	WB
推荐浓度	WB: 1:500 - 1:1000
理论分子量	32kDa
实测分子量	32KDa
形式	Liquid
保存条件	Store at -20°C. Avoid freeze / thaw cycles. Buffer: PBS with 0.01% thiomersal,50% glycerol,pH7.3.
偶联物	Unconjugated
阳性对照	293T,HepG2,RD,Rat skeletal muscle
细胞定位	Nucleus
纯化	Affinity purification

抗原信息

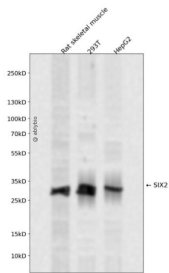
抗原信息	Recombinant fusion protein containing a sequence corresponding to amino acids 120-174 of human SIX2 (NP_058628.3).
序列	SIWDGEETSYCFKEKRSVLRWYAHNPYSPREKRELAETGLTTTQVSNWFKN

靶点信息

研究背景	This gene is a member of the vertebrate gene family which encode proteins homologous to the Drosophila 'sine oculis' homeobox protein. The encoded protein is a transcription factor which, like other members of this gene family, may be involved in limb or eye development.
基因ID	10736
基因名	SIX2

Swiss	Q9NPC8
别名	SIX2

产品验证



Western blot analysis of SIX2 expressed in Rat skeletal muscle,293T,HepG2 using SIX2 Rabbit pAb at 1:1 000. Secondary antibody: HRP Goat Anti-Rabbit IgG (H+L) at 1:5000. Lysates/proteins: 30ug per lane. Blocking buffer: 5% non-fat dry milk in TBST. Detection: ECL Enhanced Kit. Exposure time: 120s.

实验步骤

访问官网浏览详情: www.ablybio.cn