

ZFP36L1 Rabbit pAb

货号: AYP15886

产品信息

反应	Human,Mouse,Rat
宿主	Rabbit
克隆性	Polyclonal
预测反应	
应用	WB
推荐浓度	WB: 1:500 - 1:2000
理论分子量	36kDa
实测分子量	45-50kDa
形式	Liquid
保存条件	Store at -20°C. Avoid freeze / thaw cycles. Buffer: PBS with 0.01% thiomersal,50% glycerol,pH7.3.
偶联物	Unconjugated
阳性对照	SKOV3,Rat liver
细胞定位	Cytoplasm,Nucleus
纯化	Affinity purification

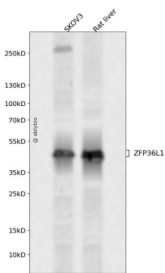
抗原信息

抗原信息	Recombinant fusion protein containing a sequence corresponding to amino acids 1-338 of human ZFP36L1 (NP_004917.2).
序列	MTTTLVSATIFDLSEVLCKGNKMLNYSAPSAGGCLLDRKAVGTPAGGGFPRRHVSVTLPSSKFHQNQLLSSLKGEPA SRDSRFRDRSFSEGGERLLPTQKQPGGGQVNSSRYKTELCRPFEEGACKYGDQCFAHGIHELRLTRHPKYKTELCRT FHTIGFCPYGPRCHFIHNAEERRALAGARDLSADRPRLQHSFSFAGFPSAAATAAATGLLDSPTSITPPILSADDLLGSPTL PDGTNPNPFAFSSQELASLFAPSMGLPGGGSPPTTFLFRPMSESPHMFDSPPSPQDLSLSDQEGYLSSSSSSSHSGSDSPTLDN SRRLPIFSRLSISDD

靶点信息

研究背景	This gene is a member of the TIS11 family of early response genes, which are induced by various agonists such as the phorbol ester TPA and the polypeptide mitogen EGF. This gene is well conserved across species and has a promoter that contains motifs seen in other early-response genes. The encoded protein contains a distinguishing putative zinc finger domain with a repeating cys-his motif. This putative nuclear transcription factor most likely functions in regulating the response to growth factors. Alternatively spliced transcript variants encoding different isoforms have been found for this gene.
基因ID	677
基因名	ZFP36L1
Swiss	Q07352
别名	ZFP36L1;BRF1;Berg36;ERF-1;ERF1;RNF162B;TIS11B;CMG1

产品验证



Western blot analysis of ZFP36L1 expressed in SKOV3, Rat liver using ZFP36L1 Rabbit pAb at 1:1000. Secondary antibody: HRP Goat Anti-Rabbit IgG (H+L) at 1:5000. Lysates/proteins: 30ug per lane. Blocking buffer: 5% non-fat dry milk in TBST. Detection: ECL Enhanced Kit. Exposure time: 120s.

实验步骤

访问官网浏览详情: www.ablybio.cn