

# LEO1 Rabbit pAb

货号: **AYP15885**

## 产品信息

反应	Human,Mouse,Rat
宿主	Rabbit
克隆性	Polyclonal
预测反应	
应用	WB IHC IF/ICC
推荐浓度	<b>WB:</b> 1:500 - 1:1000 <b>IHC:</b> 1:50 - 1:200 <b>IF/ICC:</b> 1:50 - 1:200
理论分子量	68kDa/75kDa
实测分子量	105KDa
形式	Liquid
保存条件	Store at -20°C. Avoid freeze / thaw cycles. Buffer: PBS with 0.01% thiomersal,50% glycerol,pH7.3.
偶联物	Unconjugated
阳性对照	HepG2,Jurkat,Mouse liver,Mouse brain,Rat brain
细胞定位	Nucleus
纯化	Affinity purification

## 抗原信息

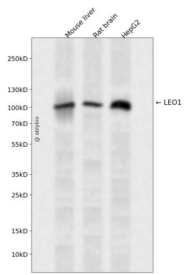
抗原信息	Recombinant fusion protein containing a sequence corresponding to amino acids 340-570 of human LEO1 (NP_620147.1).
序列	ENGLPQDQQEPIPETRIEVEIPKVNTDLGNDLYFVKLPNFLSVEPRPFDPQYYEDEFEEMLDEEGRTRLKLVKVENTIRWRIRRDEEGNEIKESNARIVKWSGMSLHLGNEVFDVYKAPLQGDHNLHFRQGTGLQGQAVFKTKLTFRPHSTDSATHRKMTLSLADRCSTQKIRILPMAGRDPECQRTEMIKKEEERLRSIRRESQQRRMREKQHQRGLSASYL

## 靶点信息

研究背景	LEO1, parafibromin (CDC73; MIM 607393), CTR9 (MIM 609366), and PAF1 (MIM 610506) form the PAF protein complex that associates with the RNA polymerase II subunit POLR2A (MIM 180660) and with a histone methyltransferase complex (Rozenblatt-Rosen et al., 2005 [PubMed 15632063]).[supplied by OMIM, Mar 2008]
------	--

基因ID	123169
基因名	LEO1
Swiss	Q8WVC0
别名	LEO1;RDL

## 产品验证



Western blot analysis of LEO1 expressed in Mouse liver, Rat brain, HepG2 using LEO1 Rabbit pAb at 1:1000. Secondary antibody: HRP Goat Anti-Rabbit IgG (H+L) at 1:5000. Lysates/proteins: 30ug per lane. Blocking buffer: 5% non-fat dry milk in TBST. Detection: ECL Enhanced Kit. Exposure time: 120s.

## 实验步骤

访问官网浏览详情: [www.ablybio.cn](http://www.ablybio.cn)