

VPS33B Rabbit pAb

货号: **AYP15883**

产品信息

反应	Human,Mouse
宿主	Rabbit
克隆性	Polyclonal
预测反应	
应用	WB IF/ICC
推荐浓度	WB: 1:1000 - 1:2000 IF/ICC: 1:50 - 1:200
理论分子量	60kDa/70kDa
实测分子量	62kDa
形式	Liquid
保存条件	Store at -20°C. Avoid freeze / thaw cycles. Buffer: PBS with 0.02% sodium azide,50% glycerol,pH7.3.
偶联物	Unconjugated
阳性对照	A-549,MCF7,DU145
细胞定位	Cytoplasmic side,Cytoplasmic vesicle,Early endosome,Late endosome membrane,Lysosome membrane,Peripheral membrane protein,Recycling endosome,clathrin-coated vesicle
纯化	Affinity purification

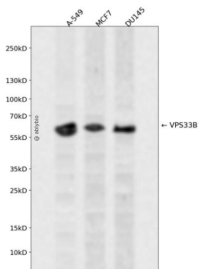
抗原信息

抗原信息	Recombinant fusion protein containing a sequence corresponding to amino acids 348-617 of human VPS33B (NP_061138.3).
序列	CESIMKKKTKQDFQELIKTEHALLEGFNIRESTSYIEEHIDRQVSPIESLRMLCLLSITENGLIPKDYRSLKTQYLQSYGPEHLLTFSNLRRAGLLTEQAPGDTLTAVESKVSCLVTDKAAGKITDAFSSLAKRSNFRAISKLNLIIPRVLDGEYDLKVPKPRDMAYVFGGAYVPLSCRRIEQVLERRSWQGLDEVVRLNCSDFAFDTMTKEDKASSESLRLILVVFLGGCTFSEISALRFLGREKGYRFIFLTTAVTNSARLMEAMSEVKA

靶点信息

研究背景	Vesicle mediated protein sorting plays an important role in segregation of intracellular molecules into distinct organelles. Genetic studies in yeast have identified more than 40 vacuolar protein sorting (VPS) genes involved in vesicle transport to vacuoles. This gene is a member of the Sec-1 domain family, and encodes the human ortholog of rat Vps33b which is homologous to the yeast class C Vps33 protein. The mammalian class C vacuolar protein sorting proteins are predominantly associated with late endosomes/lysosomes, and like their yeast counterparts, may mediate vesicle trafficking steps in the endosome/lysosome pathway. Mutations in this gene are associated with arthrogyryposis-renal dysfunction-cholestasis syndrome. Alternative splicing results in multiple transcript variants.
基因ID	26276
基因名	VPS33B
Swiss	Q9H267
别名	VPS33B

产品验证



Western blot analysis of VPS33B expressed in A-549, MCF7, DU145 using VPS33B Rabbit pAb at 1:1000. Secondary antibody: HRP Goat Anti-Rabbit IgG (H+L) at 1:5000. Lysates/proteins: 30ug per lane. Blocking buffer: 5% non-fat dry milk in TBST. Detection: ECL Enhanced Kit. Exposure time: 120s.

实验步骤

访问官网浏览详情: www.ablybio.cn