

SCFD1 Rabbit pAb

货号: **AYP15879**

产品信息

反应	Human,Mouse,Rat
宿主	Rabbit
克隆性	Polyclonal
预测反应	
应用	WB IHC
推荐浓度	WB: 1:500 - 1:2000 IHC: 1:50 - 1:200
理论分子量	62kDa/65kDa/72kDa
实测分子量	72kDa
形式	Liquid
保存条件	Store at -20°C. Avoid freeze / thaw cycles. Buffer: PBS with 0.02% sodium azide,50% glycerol,pH7.3.
偶联物	Unconjugated
阳性对照	U-87MG,A-431,293T,22Rv1,DU145,Mouse liver,Mouse kidney,Rat liver
细胞定位	Cytoplasm,Endoplasmic reticulum membrane,Golgi apparatus,Golgi stack membrane,Peripheral membrane protein
纯化	Affinity purification

抗原信息

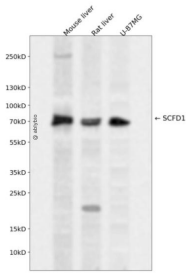
抗原信息	Recombinant fusion protein containing a sequence corresponding to amino acids 373-642 of human SCFD1 (NP_057190.2).
序列	SMLSNTAKLTSVSSLPELLEKRLIDLHTNVATAVLEHIKARKLDVYFEYEEKIMSKTTLDKSLLDIISDPDAGTPEDKMRLFLIYYISTQQAPSEADLEQYKALTDAGCNLNPLQYIKQWKAFTKMASAPASYGSTTTKPMGLLSRVMNTGSQFVMEGVKNLVLKQQLPVTIRLDNLMEMKSNPETDDYRYFDPKMLRGNDSVPRNKNPFQEAIVFVGGGNYIEYQNLVDYIKGKQGKHILYGCSELFNATQFIKQLSQLGQK

靶点信息

研究背景	Plays a role in SNARE-pin assembly and Golgi-to-ER retrograde transport via its interaction with COG4. Involved in vesicular transport between the endoplasmic reticulum and the Golgi (By similarity).
------	---

基因ID	23256
基因名	SCFD1
Swiss	Q8WVM8
别名	SCFD1;C14orf163;RA410;SLY1;SLY1P;STXBP1L2

产品验证



Western blot analysis of SCFD1 expressed in Mouse liver,Rat liver,U-87MG using SCFD1 Rabbit pAb at 1:1000. Secondary antibody: HRP Goat Anti-Rabbit IgG (H+L) at 1:5000. Lysates/proteins: 30ug per lane . Blocking buffer: 5% non-fat dry milk in TBST. Detection: ECL Enhanced Kit. Exposure time: 120s.

实验步骤

访问官网浏览详情: www.ablybio.cn