

# KLF7 Rabbit pAb

货号: **AYP15876**

## 产品信息

反应	Human,Mouse
宿主	Rabbit
克隆性	Polyclonal
预测反应	
应用	WB
推荐浓度	<b>WB:</b> 1:500 - 1:1000
理论分子量	9kDa/13kDa/24kDa/29kDa/30kDa/33kDa
实测分子量	33KDa
形式	Liquid
保存条件	Store at -20°C. Avoid freeze / thaw cycles. Buffer: PBS with 0.01% thiomersal,50% glycerol,pH7.3.
偶联物	Unconjugated
阳性对照	Mouse kidney
细胞定位	Nucleus
纯化	Affinity purification

## 抗原信息

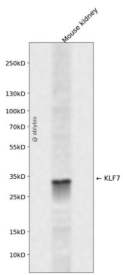
抗原信息	Recombinant fusion protein containing a sequence corresponding to amino acids 51-230 of human KLF7 (NP_001257871.1).
序列	SETFGEDLDCFLHASPPPCIEESFRRLDPLLLPVEAAICEKSSAVDILLSRDKLLSETCLSLQPASSSLDSYTAVNQAQLNAVTS LTPPSSPELSRHLVKTSQTL SAVDGTVTLKLVAKKAALSSVKVRS LISAHGRDVS GVLHEAMSSRGTTGNTQVQSPSNA TTATGVFPGLTILPST

## 靶点信息

研究背景	The protein encoded by this gene is a member of the Kruppel-like transcriptional regulator family. Members in this family regulate cell proliferation, differentiation and survival and contain three C2H2 zinc fingers at the C-terminus that mediate binding to GC-rich sites. This protein may contribute to the progression of type 2 diabetes by inhibiting insulin expression and secretion in pancreatic beta-cells and by deregulating adipocytokine secretion in adipocytes. A pseudogene of this gene is located on the long arm of chromosome 3. Alternative splicing results in multiple transcript variants.
------	---

基因ID	8609
基因名	KLF7
Swiss	O75840
别名	KLF7;UKLF

## 产品验证



Western blot analysis of KLF7 expressed in Mouse kidney using KLF7 Rabbit pAb at 1:1000. Secondary antibody: HRP Goat Anti-Rabbit IgG (H+L) at 1:5000. Lysates/proteins: 30ug per lane. Blocking buffer: 5% non-fat dry milk in TBST. Detection: ECL Enhanced Kit. Exposure time: 120s.

## 实验步骤

访问官网浏览详情: [www.ablybio.cn](http://www.ablybio.cn)