

TCF7L1 Rabbit pAb

货号: **AYP15858**

产品信息

反应	Human,Mouse,Rat
宿主	Rabbit
克隆性	Polyclonal
预测反应	
应用	WB
推荐浓度	WB: 1:500 - 1:1000
理论分子量	62kDa
实测分子量	75KDa
形式	Liquid
保存条件	Store at -20°C. Avoid freeze / thaw cycles. Buffer: PBS with 0.05% proclin300,50% glycerol,pH7.3.
偶联物	Unconjugated
阳性对照	HeLa,HCT116,A-549,A-431,Mouse lung,Mouse brain,Mouse skin,Rat lung,Rat skin
细胞定位	Nucleus
纯化	Affinity purification

抗原信息

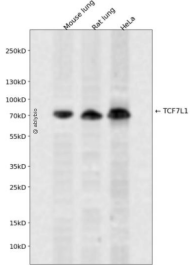
抗原信息	Recombinant fusion protein containing a sequence corresponding to amino acids 260-340 of human TCF7 L1 (NP_112573.1).
序列	YSLPPGGFRHPYPALAMNASMSSLVSSRFSPHMOVAPAHPLPTSGIPHPAIVSPIVKQEPAPPSLSPAVSVKSPVTVKKEE

靶点信息

研究背景	This gene encodes a member of the T cell factor/lymphoid enhancer factor family of transcription factors. These transcription factors are activated by beta catenin, mediate the Wnt signaling pathway and are antagonized by the transforming growth factor beta signaling pathway. The encoded protein contains a high mobility group-box DNA binding domain and participates in the regulation of cell cycle genes and cellular senescence.
基因ID	83439

基因名	TCF7L1
Swiss	Q9HCS4
别名	TCF7L1;TCF-3;TCF3

产品验证



Western blot analysis of TCF7L1 expressed in Mouse lung,Rat lung,HeLa using TCF7L1 Rabbit pAb at 1:1000. Secondary antibody: HRP Goat Anti-Rabbit IgG (H+L) at 1:5000. Lysates/proteins: 30ug per lane. Blocking buffer: 5% non-fat dry milk in TBST. Detection: ECL Enhanced Kit. Exposure time: 120s.

实验步骤

访问官网浏览详情: www.ablybio.cn