

ERAP2 Rabbit pAb

货号: **AYP15856**

产品信息

| | |
|-------|--|
| 反应 | Human |
| 宿主 | Rabbit |
| 克隆性 | Polyclonal |
| 预测反应 | |
| 应用 | WB |
| 推荐浓度 | WB: 1:500 - 1:2000 |
| 理论分子量 | 40kDa/60kDa/105kDa/110kDa |
| 实测分子量 | 110kDa |
| 形式 | Liquid |
| 保存条件 | Store at -20°C. Avoid freeze / thaw cycles. Buffer: PBS with 0.01% thiomersal,50% glycerol,pH7.3. |
| 偶联物 | Unconjugated |
| 阳性对照 | A375,HeLa,293T |
| 细胞定位 | Endoplasmic reticulum membrane,Single-pass type II membrane protein |
| 纯化 | Affinity purification |

抗原信息

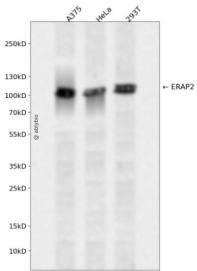
| | |
|------|--|
| 抗原信息 | Recombinant fusion protein containing a sequence corresponding to amino acids 1-170 of human ERAP2 (NP_071745.1). |
| 序列 | MFHSSAMVNSHRKPMFNIHRGFYCLTAILPQICICSQFSVPSSYHFTEDPGAFPVATNGERFPWQELRLPSVVIPLHYDLFVHPNLTSLDFVASEKIEVLVSNATQFIILHSDKLEITNATLQSEEDSRYMKPGKELKVLSPAEHQIALLVPEKLTPhLKYVAMDFQA |

靶点信息

| | |
|------|--|
| 研究背景 | This gene encodes a zinc metalloaminopeptidase of the M1 protease family that resides in the endoplasmic reticulum and functions in N-terminal trimming antigenic epitopes for presentation by major histocompatibility complex (MHC) class I molecules. Certain mutations in this gene are associated with the inflammatory arthritis syndrome ankylosing spondylitis and pre-eclampsia. This gene is located adjacent to a closely related aminopeptidase gene on chromosome 5. [provided by RefSeq, Jul 2016] |
|------|--|

| | |
|-------|------------------|
| 基因ID | 64167 |
| 基因名 | ERAP2 |
| Swiss | Q6P179 |
| 别名 | ERAP2;L-RAP;LRAP |

产品验证



Western blot analysis of ERAP2 expressed in A375, HeLa, 293T using ERAP2 Rabbit pAb at 1:1000. Secondary antibody: HRP Goat Anti-Rabbit IgG (H+L) at 1:5000. Lysates/proteins: 30ug per lane. Blocking buffer: 5% non-fat dry milk in TBST. Detection: ECL Enhanced Kit. Exposure time: 120s.

实验步骤

访问官网浏览详情: www.ablybio.cn