

CRIP2 Rabbit pAb

货号: **AYP15855**

产品信息

反应	Human,Mouse,Rat
宿主	Rabbit
克隆性	Polyclonal
预测反应	
应用	WB
推荐浓度	WB: 1:500 - 1:2000
理论分子量	22kDa/30kDa
实测分子量	22kDa
形式	Liquid
保存条件	Store at -20°C. Avoid freeze / thaw cycles. Buffer: PBS with 0.02% sodium azide,50% glycerol,pH7.3.
偶联物	Unconjugated
阳性对照	HeLa,HepG2,BT-474,HT-1080,Mouse brain,Mouse lung,Rat heart
细胞定位	cell cortex
纯化	Affinity purification

抗原信息

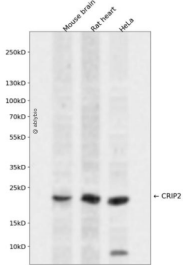
抗原信息	Recombinant fusion protein containing a sequence corresponding to amino acids 1-208 of human CRIP2 (NP_001303.1).
序列	MASKCPKCDKTVYFAEKVSSLGKDWKFKLKCERCSTLTPGGHAEHDGKPFCHKPCYATLFGPKGVNIGGAGSYIEKP LAEGPQVTGPIEVPAARAEERKASGPPKGPSRASSVTTFTGEPNTCPRCSKKVYFAEKVTSLGKDWHRPCLRCERCSTLTPGGHAEHDGQPYCHKPCYGILFGPKGVNTGAVGSYIYDRDPEGKVQP

靶点信息

研究背景	This gene encodes a putative transcription factor with two LIM zinc-binding domains. The encoded protein may participate in the differentiation of smooth muscle tissue. Alternative splicing results in multiple transcript variants.
基因ID	1397

基因名	CRIP2
Swiss	P52943
别名	CRIP2;CRIP;CRP2;ESP1

产品验证



Western blot analysis of CRIP2 expressed in Mouse brain,Rat heart,HeLa using CRIP2 Rabbit pAb at 1:1000. Secondary antibody: HRP Goat Anti-Rabbit IgG (H+L) at 1:5000. Lysates/proteins: 30ug per lane. Blocking buffer: 5% non-fat dry milk in TBST. Detection: ECL Enhanced Kit. Exposure time: 120s.

实验步骤

访问官网浏览详情: www.ablybio.cn