

YWHAH Rabbit pAb

货号: **AYP15849**

产品信息

反应	Human,Mouse,Rat
宿主	Rabbit
克隆性	Polyclonal
预测反应	
应用	WB IHC IF/ICC
推荐浓度	WB: 1:500 - 1:2000 IHC: 1:50 - 1:100 IF/ICC: 1:50 - 1:100
理论分子量	28kDa
实测分子量	28kDa
形式	Liquid
保存条件	Store at -20°C. Avoid freeze / thaw cycles. Buffer: PBS with 0.01% thiomersal,50% glycerol,pH7.3.
偶联物	Unconjugated
阳性对照	U-87MG,LO2,Raji,Jurkat,Mouse heart,Mouse kidney
细胞定位	cerebellar granule cell to Purkinje cell synapse,cytoplasm,cytosol,extracellular exosome,plasma membrane,presynapse
纯化	Affinity purification

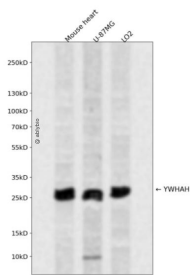
抗原信息

抗原信息	Recombinant fusion protein containing a sequence corresponding to amino acids 1-246 of human YWHAH (NP_003396.1).
序列	MGDREQLLQRRARLAEQAERYDDMASAMKAVTELNEPLSNEDRNLLSVAYKNVVGARRSSWRVISSIEQKTMADGNEKKL EKVKAYREKIEKELETVCNDVLSLLDKFLIKNCNDFQYESKVFYLMKMGDYRYLAEVASGEKKNVVEASEAAYKEAFEISK EQMQPHTPIRLGLALNFSVFYIEIQNAPEQAQLLAKQAFDDAIAELDTLNEDSYKDSTLIMQLLRDNLTLWTSDQQDEEAG EGN

靶点信息

研究背景	This gene product belongs to the 14-3-3 family of proteins which mediate signal transduction by binding to phosphoserine-containing proteins. This highly conserved protein family is found in both plants and mammals, and this protein is 99% identical to the mouse, rat and bovine orthologs. This gene contains a 7 bp repeat sequence in its 5' UTR, and changes in the number of this repeat have been associated with early-onset schizophrenia and psychotic bipolar disorder.
基因ID	7533
基因名	YWHAH
Swiss	Q04917
别名	YWHAH;YWHA1

产品验证



Western blot analysis of YWHAH expressed in Mouse heart,U-87MG,LO2 using YWHAH Rabbit pAb at 1:1000. Secondary antibody: HRP Goat Anti-Rabbit IgG (H+L) at 1:5000. Lysates/proteins: 30ug per lane. Blocking buffer: 5% non-fat dry milk in TBST. Detection: ECL Enhanced Kit. Exposure time: 120s.

实验步骤

访问官网浏览详情: www.ablybio.cn