

MRPS25 Rabbit pAb

货号: **AYP15848**

产品信息

反应	Human
宿主	Rabbit
克隆性	Polyclonal
预测反应	
应用	WB
推荐浓度	WB: 1:500 - 1:2000
理论分子量	14kDa/16kDa/20kDa
实测分子量	20KDa
形式	Liquid
保存条件	Store at -20°C. Avoid freeze / thaw cycles. Buffer: PBS with 0.01% thiomersal,50% glycerol,pH7.3.
偶联物	Unconjugated
阳性对照	HeLa,A-549,BxPC-3
细胞定位	mitochondrial inner membrane,mitochondrion
纯化	Affinity purification

抗原信息

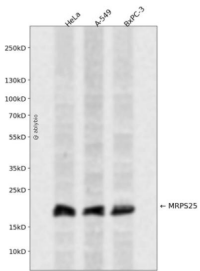
抗原信息	Recombinant fusion protein containing a sequence corresponding to amino acids 104-173 of human MRP S25 (NP_071942.1).
序列	KILGKNEETLREEEEEKQLSHPANFGPRKYCLRECICEVEGQVPCPSLVPLPKEMRGKYKAALKADAQD

靶点信息

研究背景	Mammalian mitochondrial ribosomal proteins are encoded by nuclear genes and help in protein synthesis within the mitochondrion. Mitochondrial ribosomes (mitoribosomes) consist of a small 28S subunit and a large 39S subunit. They have an estimated 75% protein to rRNA composition compared to prokaryotic ribosomes, where this ratio is reversed. Another difference between mammalian mitoribosomes and prokaryotic ribosomes is that the latter contain a 5S rRNA. Among different species, the proteins comprising the mitoribosome differ greatly in sequence, and sometimes in biochemical properties, which prevents easy recognition by sequence homology. This gene encodes a 28S subunit protein. A pseudogene corresponding to this gene is found on chromosome 4. Alternative splicing results in multiple transcript variants.
------	--

基因ID	64432
基因名	MRPS25
Swiss	P82663
别名	MRPS25;MRP-S25;RPMS25

产品验证



Western blot analysis of MRPS25 expressed in HeLa,A-549,BxPC-3 using MRPS25 Rabbit pAb at 1:1000 . Secondary antibody: HRP Goat Anti-Rabbit IgG (H+L) at 1:5000. Lysates/proteins: 30ug per lane. Blo cking buffer: 5% non-fat dry milk in TBST. Detection: ECL Enhanced Kit. Exposure time: 120s.

实验步骤

访问官网浏览详情: www.ablybio.cn