

TOM1 Rabbit pAb

货号: **AYP15821**

产品信息

反应	Human,Mouse,Rat
宿主	Rabbit
克隆性	Polyclonal
预测反应	
应用	WB IHC
推荐浓度	WB: 1:500 - 1:2000 IHC: 1:50 - 1:200
理论分子量	48kDa/50kDa/53kDa
实测分子量	54kDa
形式	Liquid
保存条件	Store at -20°C. Avoid freeze / thaw cycles. Buffer: PBS with 0.01% thiomersal,50% glycerol,pH7.3.
偶联物	Unconjugated
阳性对照	Mouse kidney,Mouse liver,Rat kidney,Rat liver
细胞定位	Cytoplasm,Membrane,Peripheral membrane protein
纯化	Affinity purification

抗原信息

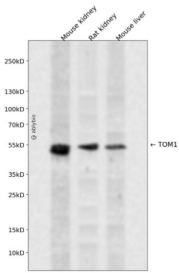
抗原信息	Recombinant fusion protein containing a sequence corresponding to amino acids 314-493 of human TOM 1 (NP_001129204.1).
序列	SEAEPAADLIDMGPDPAATGNLSSQLAGMNLGSSSVRAGLQSLQLEASGRLEDEFDMFALTRGSSLADQRKEVKYEAPQAT DGLAGALDARQQSTGAIPVTQAQLMEDIEQWLSTDVGNDAEETPKGVTSEKGFDFLEERAKAADRLPNLSSPSAEGPPG PPSGPAPRKKKTQEKDDDDMLFAL

靶点信息

研究背景	This gene was identified as a target of the v-myc oncogene. The encoded protein shares its N-terminal domain in common with proteins associated with vesicular trafficking at the endosome. It is recruited to the endosomes by its interaction with endofin. Several alternatively spliced transcript variants encoding different isoforms have been found for this gene.
------	--

基因ID	10043
基因名	TOM1
Swiss	O60784
别名	TOM1

产品验证



Western blot analysis of TOM1 expressed in Mouse kidney,Rat kidney,Mouse liver using TOM1 Rabbit pAb at 1:1000. Secondary antibody: HRP Goat Anti-Rabbit IgG (H+L) at 1:5000. Lysates/proteins: 30ug per lane. Blocking buffer: 5% non-fat dry milk in TBST. Detection: ECL Enhanced Kit. Exposure time: 120s.

实验步骤

访问官网浏览详情: www.ablybio.cn