

# KCNN1 Rabbit pAb

货号: **AYP15815**

## 产品信息

|       |  |
|-------|--|
| 反应    | Human,Mouse  |
| 宿主    | Rabbit   |
| 克隆性   | Polyclonal   |
| 预测反应  |  |
| 应用    | WB   |
| 推荐浓度  | <b>WB:</b> 1:500 - 1:2000  |
| 理论分子量 | 59kDa/61kDa  |
| 实测分子量 | 70kDa  |
| 形式    | Liquid   |
| 保存条件  | Store at -20°C. Avoid freeze / thaw cycles.<br>Buffer: PBS with 0.01% thiomersal,50% glycerol,pH7.3. |
| 偶联物   | Unconjugated   |
| 阳性对照  | U-87MG,SH-SY5Y,Jurkat,Mouse brain,Mouse heart  |
| 细胞定位  | Membrane,Multi-pass membrane protein   |
| 纯化    | Affinity purification  |

## 抗原信息

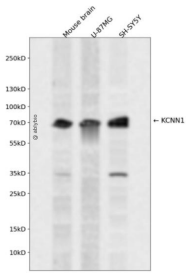
|      |  |
|------|--|
| 抗原信息 | Recombinant fusion protein containing a sequence corresponding to amino acids 1-90 of human KCNN1 (NP_002239.2). |
| 序列   | MNSHSYNGSVGRPLGSGPGALGRDPPDPEAGHPPQPPHSPGLQVVVAKSEPARPSPGSPRGQPQDQDDDEDDEDEEA<br>GRQRASGKPSNVG                   |

## 靶点信息

|      |  |
|------|--|
| 研究背景 | Action potentials in vertebrate neurons are followed by an afterhyperpolarization (AHP) that may persist for several seconds and may have profound consequences for the firing pattern of the neuron. Each component of the AHP is kinetically distinct and is mediated by different calcium-activated potassium channels. The protein encoded by this gene is activated before membrane hyperpolarization and is thought to regulate neuronal excitability by contributing to the slow component of synaptic AHP. The encoded protein is an integral membrane protein that forms a voltage-independent calcium-activated channel with three other calmodulin-binding subunits. This gene is a member of the KCNN family of potassium channel genes. |
|------|--|

|       |                             |
|-------|-----------------------------|
| 基因ID  | 3780                        |
| 基因名   | KCNN1                       |
| Swiss | Q92952                      |
| 别名    | KCNN1;KCa2.1;SK1;SKCA1;hSK1 |

## 产品验证



Western blot analysis of KCNN1 expressed in Mouse brain,U-87MG,SH-SY5Y using KCNN1 Rabbit pAb at 1:1000. Secondary antibody: HRP Goat Anti-Rabbit IgG (H+L) at 1:5000. Lysates/proteins: 30ug per lane. Blocking buffer: 5% non-fat dry milk in TBST. Detection: ECL Enhanced Kit. Exposure time: 120s.

## 实验步骤

访问官网浏览详情: [www.ablybio.cn](http://www.ablybio.cn)