

# CRYGC Rabbit pAb

货号: **AYP15813**

## 产品信息

反应	Human,Mouse,Rat
宿主	Rabbit
克隆性	Polyclonal
预测反应	
应用	WB IF/ICC
推荐浓度	<b>WB:</b> 1:1000 - 1:2000 <b>IF/ICC:</b> 1:50 - 1:200
理论分子量	20kDa
实测分子量	17kDa
形式	Liquid
保存条件	Store at -20°C. Avoid freeze / thaw cycles. Buffer: PBS with 0.02% sodium azide,50% glycerol,pH7.3.
偶联物	Unconjugated
阳性对照	MCF7,U-251MG
细胞定位	cytoplasm,nucleus
纯化	Affinity purification

## 抗原信息

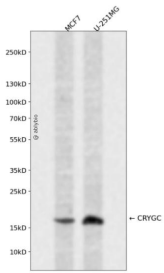
抗原信息	Recombinant fusion protein containing a sequence corresponding to amino acids 1-174 of human CRYGC (NP_066269.1).
序列	MGKITFYEDRAFQGRSYETTTDCPNLQPYFSRCNSIRVESGCWMLYERPNIYQGQQYLLRRGEYDPYQQWMGLSDSIRSC CLIPQTVSHRLRLYEREDHKGLMMESEDPCSIQDRFHLSEIRSLHVLEGCWVLYELPNYRGRQYLLRPQEYRRCQDWGA MDAKAGSLRRVVDLY

## 靶点信息

研究背景	This gene encodes a member of the beta/gamma-crystallin family of proteins. Crystallins constitute the major proteins of vertebrate eye lens and maintain the transparency and refractive index of the lens. This gene and several family members are present in a gene cluster on chromosome 2. Mutations in this gene have been shown to cause multiple types of cataract, including Coppock-like cataract and zonular pulverulent cataract, among others.
------	--

基因ID	1420
基因名	CRYGC
Swiss	P07315
别名	CRYGC;CCL;CRYG3;CTRCT2

## 产品验证



Western blot analysis of CRYGC expressed in MCF7,U-251MG using CRYGC Rabbit pAb at 1:1000. Secondary antibody: HRP Goat Anti-Rabbit IgG (H+L) at 1:5000. Lysates/proteins: 30ug per lane. Blocking buffer: 5% non-fat dry milk in TBST. Detection: ECL Enhanced Kit. Exposure time: 120s.

## 实验步骤

访问官网浏览详情: [www.ablybio.cn](http://www.ablybio.cn)