

# EGFL7 Rabbit pAb

货号: **AYP15806**

## 产品信息

反应	Mouse,Rat
宿主	Rabbit
克隆性	Polyclonal
预测反应	
应用	WB
推荐浓度	<b>WB:</b> 1:500 - 1:2000
理论分子量	29kDa
实测分子量	30kDa
形式	Liquid
保存条件	Store at -20°C. Avoid freeze / thaw cycles. Buffer: PBS with 0.01% thiomersal,50% glycerol,pH7.3.
偶联物	Unconjugated
阳性对照	Mouse heart,Mouse lung,Mouse kidney,Rat spleen,Rat kidney
细胞定位	Secreted,extracellular space
纯化	Affinity purification

## 抗原信息

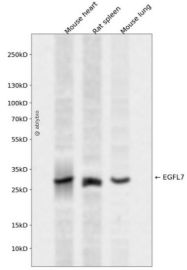
抗原信息	Recombinant fusion protein containing a sequence corresponding to amino acids 24-100 of human EGFL7 (NP_958854.1).
序列	YRPGRRVCAVRAHGDPVSESFVQRVYQPFLTTCDGHRACSTYRTIYRTAYRRSPGLAPARPRYACCPGWKRTSGLPG

## 靶点信息

研究背景	This gene encodes a secreted endothelial cell protein that contains two epidermal growth factor-like domains. The encoded protein may play a role in regulating vasculogenesis. This protein may be involved in the growth and proliferation of tumor cells. Alternate splicing results in multiple transcript variants.
基因ID	51162
基因名	EGFL7

<b>Swiss</b>	Q9UHF1
别名	EGFL7;NEU1;VE-STATIN;ZNEU1

## 产品验证



Western blot analysis of EGFL7 expressed in Mouse heart,Rat spleen,Mouse lung using EGFL7 Rabbit pAb at 1:1000. Secondary antibody: HRP Goat Anti-Rabbit IgG (H+L) at 1:5000. Lysates/proteins: 30ug per lane. Blocking buffer: 5% non-fat dry milk in TBST. Detection: ECL Enhanced Kit. Exposure time: 120s.

## 实验步骤

访问官网浏览详情: [www.ablybio.cn](http://www.ablybio.cn)