

DEPDC6 Rabbit pAb

货号: **AYP15799**

产品信息

反应	Human,Mouse
宿主	Rabbit
克隆性	Polyclonal
预测反应	
应用	WB
推荐浓度	WB: 1:500 - 1:2000
理论分子量	34kDa/46kDa
实测分子量	48KDa
形式	Liquid
保存条件	Store at -20°C. Avoid freeze / thaw cycles. Buffer: PBS with 0.01% thiomersal,50% glycerol,pH7.3.
偶联物	Unconjugated
阳性对照	HeLa,HepG2,MCF7
细胞定位	
纯化	Affinity purification

抗原信息

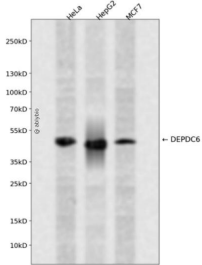
抗原信息	Recombinant fusion protein containing a sequence corresponding to amino acids 1-217 of human DEPDC6 (NP_073620.2).
序列	MEEGGSTGSAGSDSSTSGSGGAQQRELERMAEVLVTGEQLRLRLHEEKVIKDRRHHLKTYPNCFVAKELIDWLIEHKEAS DRETAIKLMQKLADRGIIHHVCDEHKEFKDVKLFYRFRKDDGTFPLDNEVKAFMRGQRLYEKLMSPENTLLQPREEEGVKY ERTFMASEFLDWLVQEGEATTRKEAEQLCHRLMEHGIIQHVS NKHPFVDSNLLYQF

靶点信息

研究背景	Negative regulator of the mTORC1 and mTORC2 signaling pathways. Inhibits the kinase activity of both c complexes.
基因ID	64798

基因名	DEPTOR
Swiss	Q8TB45
别名	DEPTOR;DEP.6;DEPDC6

产品验证



Western blot analysis of DEPDC6 expressed in HeLa,HepG2,MCF7 using DEPDC6 Rabbit pAb at 1:1000 . Secondary antibody: HRP Goat Anti-Rabbit IgG (H+L) at 1:5000. Lysates/proteins: 30ug per lane. Blo cking buffer: 5% non-fat dry milk in TBST. Detection: ECL Enhanced Kit. Exposure time: 120s.

实验步骤

访问官网浏览详情: www.ablybio.cn