

IER5 Rabbit pAb

货号: **AYP15797**

产品信息

反应	Human,Mouse,Rat
宿主	Rabbit
克隆性	Polyclonal
预测反应	
应用	WB IHC IF/ICC
推荐浓度	WB: 1:500 - 1:2000 IHC: 1:50 - 1:200 IF/ICC: 1:50 - 1:200
理论分子量	
实测分子量	34kDa
形式	Liquid
保存条件	Store at -20°C. Avoid freeze / thaw cycles. Buffer: PBS with 0.01% thiomersal,50% glycerol,pH7.3.
偶联物	Unconjugated
阳性对照	HeLa,A-549,Mouse testis,Rat lung
细胞定位	cytoplasm,nucleolus,nucleoplasm,nucleus
纯化	Affinity purification

抗原信息

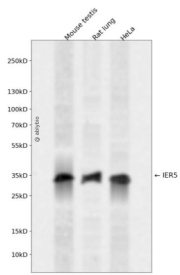
抗原信息	A synthetic peptide corresponding to a sequence within amino acids 200-300 of human IER5 (NP_057629.2).
序列	APQPAEDEPPAPPVAVCPKRCAAGVGGGPAGCPAPGSTPLKKPRRNLEQPPSGGEDDDAEEMETGNVANLISIFGSSFSG LLRKSPGGGEEEEEGEESGPE

靶点信息

研究背景	This gene encodes a protein that is similar to other immediate early response proteins. In the mouse, a similar gene may play an important role in mediating the cellular response to mitogenic signals. Studies in rats found the expression of a similar gene to be increased after waking and sleep deprivation. [provided by RefSeq, Jul 2008]
------	--

基因ID	51278
基因名	IER5
Swiss	Q5VY09
别名	SBBI48;IER5

产品验证



Western blot analysis of IER5 expressed in Mouse testis,Rat lung,HeLa using IER5 Rabbit pAb at 1:1000. Secondary antibody: HRP Goat Anti-Rabbit IgG (H+L) at 1:5000. Lysates/proteins: 30ug per lane. Blocking buffer: 5% non-fat dry milk in TBST. Detection: ECL Enhanced Kit. Exposure time: 120s.

实验步骤

访问官网浏览详情: www.ablybio.cn