

# TBC1D1 Rabbit pAb

货号: AYP15790

## 产品信息

反应	Human,Mouse,Rat
宿主	Rabbit
克隆性	Polyclonal
预测反应	
应用	WB
推荐浓度	<b>WB:</b> 1:500 - 1:1000
理论分子量	131kDa/133kDa
实测分子量	150KDa
形式	Liquid
保存条件	Store at -20°C. Avoid freeze / thaw cycles. Buffer: PBS with 0.05% proclin300,50% glycerol,pH7.3.
偶联物	Unconjugated
阳性对照	HeLa,Mouse testis,Rat testis
细胞定位	Nucleus
纯化	Affinity purification

## 抗原信息

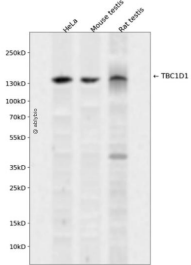
抗原信息	A synthetic peptide corresponding to a sequence within amino acids 1069-1168 of human TBC1D1 (NP_055988.2).
序列	IDSSPLSDNQRMKDLEKTNSSLRKQNLDLLEQLQVANGRIQSLEATIEKLLSSESCLKQAMLTLELERSALLQTVEELRRRSA EPSDREPECTQPEPTGD

## 靶点信息

研究背景	TBC1D1 is the founding member of a family of proteins sharing a 180- to 200-amino acid TBC domain presumed to have a role in regulating cell growth and differentiation. These proteins share significant homology with TRE2 (USP6; MIM 604334), yeast Bub2, and CDC16 (MIM 603461) (White et al., 2000 [PubMed 10965142]).[supplied by OMIM, Mar 2008]
基因ID	23216

基因名	TBC1D1
Swiss	Q86TI0
别名	TBC1D1;TBC;TBC1

## 产品验证



Western blot analysis of TBC1D1 expressed in HeLa, Mouse testis, Rat testis using TBC1D1 Rabbit pAb at 1:1000. Secondary antibody: HRP Goat Anti-Rabbit IgG (H+L) at 1:5000. Lysates/proteins: 30ug per lane. Blocking buffer: 5% non-fat dry milk in TBST. Detection: ECL Enhanced Kit. Exposure time: 120s.

## 实验步骤

访问官网浏览详情: [www.ablybio.cn](http://www.ablybio.cn)