

SARDH Rabbit pAb

货号: AYP15785

产品信息

反应	Mouse,Rat
宿主	Rabbit
克隆性	Polyclonal
预测反应	
应用	WB IF/ICC
推荐浓度	WB: 1:500 - 1:2000 IF/ICC: 1:50 - 1:100
理论分子量	82kDa/101kDa
实测分子量	101kDa
形式	Liquid
保存条件	Store at -20°C. Avoid freeze / thaw cycles. Buffer: PBS with 0.01% thiomersal,50% glycerol,pH7.3.
偶联物	Unconjugated
阳性对照	Mouse brain,Mouse liver,Rat liver
细胞定位	Mitochondrion matrix
纯化	Affinity purification

抗原信息

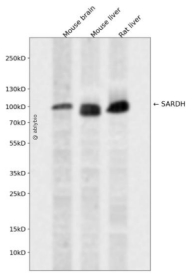
抗原信息	Recombinant fusion protein containing a sequence corresponding to amino acids 300-560 of human SARDH (NP_009032.2).
序列	RIEQIQNMPNVRDHDASVYLRLQGDALSVGGYEANPIFWEEVSDKFAFGLFDLDWEVFTQHIEGAINRVPVLEKTGIKSTVCGPESFTPDKPLMGEAPELRGFFLGCGFNSAGMMLGGGCGQELAHWIIHGRPEKDMHGVDIRRFHSLTDHPRWIRERSHESYAKNYSVVFPHDEPLAGRNMRDPLHEELGQGCVFQERHGWERPGWFHPRGPAPVLEYDYYGAYGSRAHEDYAYRRLLADEYTFAPPHHTIKKE

靶点信息

研究背景	This gene encodes an enzyme localized to the mitochondrial matrix which catalyzes the oxidative demethylation of sarcosine. This enzyme is distinct from another mitochondrial matrix enzyme, dimethylglycine dehydrogenase, which catalyzes a reaction resulting in the formation of sarcosine. Mutations in this gene are associated with sarcosinemia. Alternatively spliced transcript variants have been described.
------	--

基因ID	1757
基因名	SARDH
Swiss	Q9UL12
别名	SARDH;BPR-2;DMGDHL1;SAR;SARD;SDH

产品验证



Western blot analysis of SARDH expressed in Mouse brain, Mouse liver, Rat liver using SARDH Rabbit pAb at 1:1000. Secondary antibody: HRP Goat Anti-Rabbit IgG (H+L) at 1:5000. Lysates/proteins: 30ug per lane. Blocking buffer: 5% non-fat dry milk in TBST. Detection: ECL Enhanced Kit. Exposure time: 120s.

实验步骤

访问官网浏览详情: www.ablybio.cn