

— ABLYBIO, Help Your Research



# PHLPP1 Rabbit pAb

货号: **AYP15782**

## 产品信息

反应	Human,Mouse,Rat
宿主	Rabbit
克隆性	Polyclonal
预测反应	
应用	WB IHC IF/ICC
推荐浓度	<b>WB:</b> 1:500 - 1:1000 <b>IHC:</b> 1:50 - 1:200 <b>IF/ICC:</b> 1:50 - 1:200
理论分子量	133kDa/184kDa
实测分子量	185KDa
形式	Liquid
保存条件	Store at -20°C. Avoid freeze / thaw cycles. Buffer: PBS with 0.01% thiomersal,50% glycerol,pH7.3.
偶联物	Unconjugated
阳性对照	HeLa,SH-SY5Y,Mouse testis,Mouse brain,Rat testis,Rat brain
细胞定位	Cell membrane,Cytoplasm,Membrane,Nucleus,Peripheral membrane protein
纯化	Affinity purification

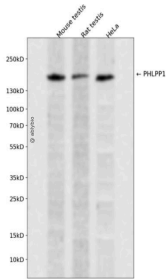
## 抗原信息

抗原信息	Recombinant fusion protein containing a sequence corresponding to amino acids 1160-1428 of human PH LPP1 (NP_919431.2).
------	---

## 靶点信息

研究背景	This gene encodes a member of the serine/threonine phosphatase family. The encoded protein promotes apoptosis by dephosphorylating and inactivating the serine/threonine kinase Akt, and functions as a tum or suppressor in multiple types of cancer. Increased expression of this gene may also play a role in obesity and type 2 diabetes by interfering with Akt-mediated insulin signaling.
基因ID	23239
基因名	PHLPP1
Swiss	O60346 ( <a href="https://www.uniprot.org/uniprotkb/O60346/entry">https://www.uniprot.org/uniprotkb/O60346/entry</a> )
别名	PHLPP1,PHLPP,PLEKHE1,PPM3A,SCOP,PHLPP1 Rabbit pAb,Pleckstrin homology domain-containing family E member 1,Suprachiasmatic nucleus circadian oscillatory protein,KIAA0606

## 产品验证



Western blot analysis of PHLPP1 expressed in Mouse testis,Rat testis,HeLa using PHLPP1 Rabbit pAb at 1: 1000. Secondary antibody: HRP Goat Anti-Rabbit IgG (H+L) at 1:5000. Lysates/proteins: 30ug per lane. Bl ocking buffer: 5% non-fat dry milk in TBST. Detection: ECL Enhanced Kit. Exposure time: 120s.

## 实验步骤

访问官网浏览详情: [www.ablybio.cn](http://www.ablybio.cn) (<https://www.ablybio.cn/>[www.ablybio.cn](http://www.ablybio.cn))