

MEPE Rabbit pAb

货号: **AYP15780**

产品信息

反应	Human,Mouse,Rat
宿主	Rabbit
克隆性	Polyclonal
预测反应	
应用	WB
推荐浓度	WB: 1:500 - 1:1000
理论分子量	45kDa/58kDa/62kDa
实测分子量	58KDa
形式	Liquid
保存条件	Store at -20°C. Avoid freeze / thaw cycles. Buffer: PBS with 0.01% thiomersal,50% glycerol,pH7.3.
偶联物	Unconjugated
阳性对照	HepG2,Mouse liver,Mouse spinal cord,Rat brain,Rat liver
细胞定位	Secreted,extracellular matrix,extracellular space
纯化	Affinity purification

抗原信息

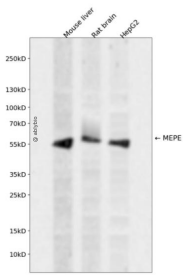
抗原信息	Recombinant fusion protein containing a sequence corresponding to amino acids 90-256 of human MEPE (NP_064588.1).
序列	FTNRQRLNKEYSISNKENTHNLGRMSIYPKSTGNKGFEDGDDAISKLHDQEEYGAALIRNNMQHIMGPVTAIKLLGEENKENTPRNVLNIIIPASMNYAKAHSKDKKKPQRDSQAQKSPVKSKSTHRIQHNIDYLNKHLKSKVKKIPSDFEKSGYTDLQERGDNDISPFSS

靶点信息

研究背景	This gene encodes a secreted calcium-binding phosphoprotein that belongs to the small integrin-binding ligand, N-linked glycoprotein (SIBLING) family of proteins. Members of this family are components of the extracellular matrix of bone and dentin and regulate bone mineralization. Deficiency of a similar protein in mouse results in increased bone mass. Mice lacking this gene are resistant to aging-related trabecular bone loss. Alternative splicing results in multiple transcript variants.
------	--

基因ID	56955
基因名	MEPE
Swiss	Q9NQ76
别名	MEPE;OF45

产品验证



Western blot analysis of MEPE expressed in Mouse liver,Rat brain,HepG2 using MEPE Rabbit pAb at 1:10 00. Secondary antibody: HRP Goat Anti-Rabbit IgG (H+L) at 1:5000. Lysates/proteins: 30ug per lane. Bl ocking buffer: 5% non-fat dry milk in TBST. Detection: ECL Enhanced Kit. Exposure time: 120s.

实验步骤

访问官网浏览详情: www.ablybio.cn