

# CHL1 Rabbit pAb

货号: **AYP15770**

## 产品信息

反应	Human,Mouse,Rat
宿主	Rabbit
克隆性	Polyclonal
预测反应	
应用	WB
推荐浓度	<b>WB:</b> 1:200 - 1:2000
理论分子量	135kDa/136kDa
实测分子量	135kDa
形式	Liquid
保存条件	Store at -20°C. Avoid freeze / thaw cycles. Buffer: PBS with 0.02% sodium azide,50% glycerol,pH7.3.
偶联物	Unconjugated
阳性对照	U-251MG,NCI-H460,Jurkat,Mouse brain,Rat spinal cord,Rat brain
细胞定位	Cell membrane,Secreted,Single-pass type I membrane protein,extracellular matrix,extracellular space
纯化	Affinity purification

## 抗原信息

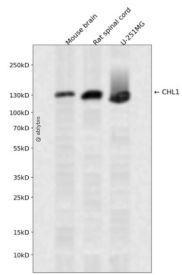
抗原信息	Recombinant fusion protein containing a sequence corresponding to amino acids 690-950 of human CHL1 (NP_001240316.1).
序列	NEVGRSQPSQPSDHHETPPAAPDRNPQIRVQASQPKEMIIKWEPLKSMEQNGPGLEYRVTWKPGAPVEWEEETVTNH TLRVMTPAVYAPYDVVKVQAINQLGSGPDPQSVTLVSGEDYPTAPVIHGVDVINSTLVKVTWSTVPKDRVHGRLKGYQIN WWKTKSLLDGRTHPKENVILRFSGQRNSGMVPSLDAFSEFHLTVLAYNSKGAGPESEPYIFQTPEGVPEQPTFLKVIKVDK DTATLSWGLPKKLNGLTGYL

## 靶点信息

研究背景	The protein encoded by this gene is a member of the L1 gene family of neural cell adhesion molecules. It is a neural recognition molecule that may be involved in signal transduction pathways. The deletion of one copy of this gene may be responsible for mental defects in patients with 3p- syndrome. This protein may also play a role in the growth of certain cancers. Alternate splicing results in both coding and non-coding variants.
------	---

基因ID	10752
基因名	CHL1
Swiss	O00533
别名	CHL1;CALL;L1CAM2

## 产品验证



Western blot analysis of CHL1 expressed in Mouse brain,Rat spinal cord,U-251MG using CHL1 Rabbit pAb at 1:1000. Secondary antibody: HRP Goat Anti-Rabbit IgG (H+L) at 1:5000. Lysates/proteins: 30ug per lane. Blocking buffer: 5% non-fat dry milk in TBST. Detection: ECL Enhanced Kit. Exposure time: 120s.

## 实验步骤

访问官网浏览详情: [www.ablybio.cn](http://www.ablybio.cn)