

# MICB Rabbit pAb

货号: **AYP15760**

## 产品信息

反应	Human
宿主	Rabbit
克隆性	Polyclonal
预测反应	
应用	WB
推荐浓度	<b>WB:</b> 1:500 - 1:2000
理论分子量	4kDa/37kDa/42kDa
实测分子量	60kDa
形式	Liquid
保存条件	Store at -20°C. Avoid freeze / thaw cycles. Buffer: PBS with 0.02% sodium azide,50% glycerol,pH7.3.
偶联物	Unconjugated
阳性对照	NCI-H460,SKOV3
细胞定位	Cell membrane,Single-pass type I membrane protein
纯化	Affinity purification

## 抗原信息

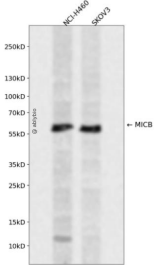
抗原信息	Recombinant fusion protein containing a sequence corresponding to amino acids 23-108 of human MICB ( NP_005922.2).
序列	AEPHSLRYNLMVLSQDGSVQSGFLAEGHLDGQPFLRYDRQKRRAKPQGQWAENVLGAKTWDTETEDLTENGQDLRRTLHIKQKKG

## 靶点信息

研究背景	This gene encodes a heavily glycosylated protein which is a ligand for the NKG2D type II receptor. Binding of the ligand activates the cytolytic response of natural killer (NK) cells, CD8 alphabeta T cells, and gamma delta T cells which express the receptor. This protein is stress-induced and is similar to MHC class I molecules; however, it does not associate with beta-2-microglobulin or bind peptides. Alternative splicing results in multiple transcript variants.
基因ID	4277

基因名	MICB
Swiss	Q29980
别名	MICB;PERB11.2

## 产品验证



Western blot analysis of MICB expressed in NCI-H460,SKOV3 using MICB Rabbit pAb at 1:1000. Secondary antibody: HRP Goat Anti-Rabbit IgG (H+L) at 1:5000. Lysates/proteins: 30ug per lane. Blocking buffer: 5% non-fat dry milk in TBST. Detection: ECL Enhanced Kit. Exposure time: 120s.

## 实验步骤

访问官网浏览详情: [www.ablybio.cn](http://www.ablybio.cn)