

CHRN2 Rabbit pAb

货号: **AYP15758**

产品信息

反应	Human,Mouse,Rat
宿主	Rabbit
克隆性	Polyclonal
预测反应	
应用	WB
推荐浓度	WB: 1:500 - 1:2000
理论分子量	57kDa
实测分子量	50-52kDa
形式	Liquid
保存条件	Store at -20°C. Avoid freeze / thaw cycles. Buffer: PBS with 0.02% sodium azide,50% glycerol,pH7.3.
偶联物	Unconjugated
阳性对照	HepG2,SH-SY5Y,Mouse liver,Rat liver
细胞定位	Cell junction,Cell membrane,Multi-pass membrane protein,postsynaptic cell membrane,synapse
纯化	Affinity purification

抗原信息

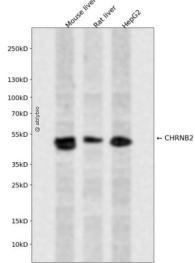
抗原信息	Recombinant fusion protein containing a sequence corresponding to amino acids 340-430 of human CHR NB2 (NP_000739.1).
序列	LEKLPALLFMQQRHHCARQLRLRRRQREREGAGALFFREAPGADSCFCVNRASVQGLAGAFGAEPAPVAGPGRSGE PCGCGGLREAVDG

靶点信息

研究背景	Neuronal acetylcholine receptors are homo- or heteropentameric complexes composed of homologous alpha and beta subunits. They belong to a superfamily of ligand-gated ion channels which allow the flow of sodium and potassium across the plasma membrane in response to ligands such as acetylcholine and nicotine. This gene encodes one of several beta subunits. Mutations in this gene are associated with autosomal dominant nocturnal frontal lobe epilepsy.
基因ID	1141

基因名	CHRNA2
Swiss	P17787
别名	CHRNA2;EFNL3;nAChRB2

产品验证



Western blot analysis of CHRNA2 expressed in Mouse liver,Rat liver,HepG2 using CHRNA2 Rabbit pAb at 1:1000. Secondary antibody: HRP Goat Anti-Rabbit IgG (H+L) at 1:5000. Lysates/proteins: 30ug per lane. Blocking buffer: 5% non-fat dry milk in TBST. Detection: ECL Enhanced Kit. Exposure time: 120s.

实验步骤

访问官网浏览详情: www.ablybio.cn