

EPHB2 Rabbit pAb

货号: **AYP15749**

产品信息

反应	Human,Mouse
宿主	Rabbit
克隆性	Polyclonal
预测反应	
应用	WB
推荐浓度	WB: 1:500 - 1:2000
理论分子量	109kDa/110kDa/117kDa
实测分子量	117kDa
形式	Liquid
保存条件	Store at -20°C. Avoid freeze / thaw cycles. Buffer: PBS with 0.02% sodium azide,50% glycerol,pH7.3.
偶联物	Unconjugated
阳性对照	NCI-H460,HepG2,HeLa,HT-1080,SW620,Mouse brain,Mouse heart
细胞定位	Cell membrane,Cell projection,Single-pass type I membrane protein,axon,dendrite
纯化	Affinity purification

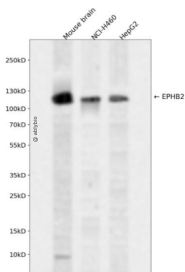
抗原信息

抗原信息	Recombinant fusion protein containing a sequence corresponding to amino acids 250-540 of human EPHB 2 (NP_059145.2).
序列	PIGRMCKAGFEAVENGTVCRGCPSTGTFKANQGD EACTHCPINSRTTSEGATNCVCRNGYYRADLDPLDMPCTTIPSAPQ AVISSVNETSLMLEWTPPRDSGGREDLVYNIICKSCGSGRGACTRCGDNVQYAPRQLGLTEPRIYISDLLAHTQYTFEIQAV NGVTDQSPFSPQFASVNITTNQAAPS AVSIMHQVSRTVDSITLSWSQPDPNGVILDYELQYYEKELSEYNATAIKSPTNT VTVQGLKAGAIYVFQVRARTVAGYGRYSGKMYFQTMTEAEYQTSIQEK

靶点信息

研究背景	This gene encodes a member of the Eph receptor family of receptor tyrosine kinase transmembrane glycoproteins. These receptors are composed of an N-terminal glycosylated ligand-binding domain, a transmembrane region and an intracellular kinase domain. They bind ligands called ephrins and are involved in diverse cellular processes including motility, division, and differentiation. A distinguishing characteristic of Eph-ephrin signaling is that both receptors and ligands are competent to transduce a signaling cascade, resulting in bidirectional signaling. This protein belongs to a subgroup of the Eph receptors called EphB. Proteins of this subgroup are distinguished from other members of the family by sequence homology and preferential binding affinity for membrane-bound ephrin-B ligands. Allelic variants are associated with prostate and brain cancer susceptibility. Alternative splicing results in multiple transcript variants.
基因ID	2048
基因名	EPHB2
Swiss	P29323
别名	EPHB2;CAPB;DRT;EK5;EPHT3;ERK;Hek5;PCBC;Tyro5

产品验证



Western blot analysis of EPHB2 expressed in Mouse brain, NCI-H460, HepG2 using EPHB2 Rabbit pAb at 1:1000. Secondary antibody: HRP Goat Anti-Rabbit IgG (H+L) at 1:5000. Lysates/proteins: 30ug per lane. Blocking buffer: 5% non-fat dry milk in TBST. Detection: ECL Enhanced Kit. Exposure time: 120s.

实验步骤

访问官网浏览详情: www.ablybio.cn