

PPIC Rabbit pAb

货号: **AYP15740**

产品信息

反应	Human
宿主	Rabbit
克隆性	Polyclonal
预测反应	
应用	WB
推荐浓度	WB: 1:500 - 1:2000
理论分子量	22kDa
实测分子量	23kDa
形式	Liquid
保存条件	Store at -20°C. Avoid freeze / thaw cycles. Buffer: PBS with 0.02% sodium azide,50% glycerol,pH7.3.
偶联物	Unconjugated
阳性对照	HeLa,MCF7,SW480,HepG2
细胞定位	Cytoplasm
纯化	Affinity purification

抗原信息

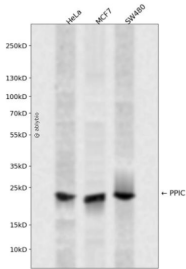
抗原信息	Recombinant fusion protein containing a sequence corresponding to amino acids 23-212 of human PPIC (NP_000934.1).
序列	SSGAEGFRKRGPSVTAKVFFDVRIGDKDVGRIVIGLFGKVVPKTVENFVALATGEKGYGYKSKFHRVIKDFMIQGGDITT GDGTGGVSIYGETFPDENFKLKHYGIGWVSMANAGPDTNGSQFFITLTKPTWLDGKHVVFVKVIDGMTVVHSIELQATD GHDRPLTNCISIINSGKIDVKTPFVVEIADW

靶点信息

研究背景	The protein encoded by this gene is a member of the peptidyl-prolyl cis-trans isomerase (PPIase)) family. PPIases catalyze the cis-trans isomerization of proline imidic peptide bonds in oligopeptides and accelerate the folding of proteins. Similar to other PPIases, this protein can bind immunosuppressant cyclosporin A .
基因ID	5480

基因名	PPIC
Swiss	P45877
别名	PPIC;CYPC

产品验证



Western blot analysis of PPIC expressed in HeLa, MCF7, SW480 using PPIC Rabbit pAb at 1:1000. Secondary antibody: HRP Goat Anti-Rabbit IgG (H+L) at 1:5000. Lysates/proteins: 30ug per lane. Blocking buffer: 5% non-fat dry milk in TBST. Detection: ECL Enhanced Kit. Exposure time: 120s.

实验步骤

访问官网浏览详情: www.ablybio.cn