

ROBO4 Rabbit pAb

货号: **AYP15725**

产品信息

反应	Human
宿主	Rabbit
克隆性	Polyclonal
预测反应	
应用	WB
推荐浓度	WB: 1:500 - 1:2000
理论分子量	75kDa/98kDa/107kDa
实测分子量	130kDa
形式	Liquid
保存条件	Store at -20°C. Avoid freeze / thaw cycles. Buffer: PBS with 0.02% sodium azide,50% glycerol,pH7.3.
偶联物	Unconjugated
阳性对照	HT-29,HepG2,HT-1080,HeLa
细胞定位	axon,extracellular exosome,plasma membrane
纯化	Affinity purification

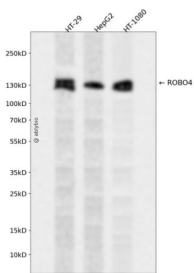
抗原信息

抗原信息	Recombinant fusion protein containing a sequence corresponding to amino acids 848-1007 of human ROBO4 (NP_061928.4).
序列	GVGPKGGVLLCPRPCLTPTPSEGLANGWGSASEDNAASARASLVSSSDGSFLADAHFARALAVAVDSFGFGLEPREA DCVFIDASSPPSPRDEIFLTPNLSLPLWEWRPDWLEDMEVSHTQRLGRGMPPWPPDSQISSQRSQLHCRMPKAGASPV YS

靶点信息

研究背景	Roundabout homolog 4, also known as magic roundabout and ROBO4 is a member of the immunoglobulin superfamily and ROBO family. ROBO4 is specifically expressed in endothelial cells. It is expressed at sites of angiogenesis in different tumor types. ROBO4 contains two fibronectin type-III domains and two Ig-like C2-type (immunoglobulin-like) domains. ROBO4 is the fourth identified member of the roundabout receptor family. It is the only Robo family member expressed in primary endothelial cells and that application of Slit inhibits their migration. ROBO4 is predominantly expressed in embryonic or tumor vascular endothelium and is considered important for vascular development and as a candidate tumor endothelial marker. ROBO4 is a bona fide member of the Robo family and may provide a repulsive cue to migrating endothelial cells during vascular development. ROBO4 is a receptor for Slit proteins, at least for SLIT2, and seems to be involved in angiogenesis and vascular patterning. ROBO4 may mediate the inhibition of primary endothelial cell migration by Slit proteins. Activating ROBO4 may have broad therapeutic application in diseases characterized by excessive angiogenesis and/or vascular leak.
基因ID	54538
基因名	ROBO4
Swiss	Q8WZ75
别名	ROBO4;ECSM4;MRB

产品验证



Western blot analysis of ROBO4 expressed in HT-29, HepG2, HT-1080 using ROBO4 Rabbit pAb at 1:1000. Secondary antibody: HRP Goat Anti-Rabbit IgG (H+L) at 1:5000. Lysates/proteins: 30ug per lane. Blocking buffer: 5% non-fat dry milk in TBST. Detection: ECL Enhanced Kit. Exposure time: 120s.

实验步骤

访问官网浏览详情: www.ablybio.cn