

RPP25L Rabbit pAb

货号: **AYP15717**

产品信息

反应	Human
宿主	Rabbit
克隆性	Polyclonal
预测反应	
应用	WB
推荐浓度	WB: 1:500 - 1:2000
理论分子量	17kDa
实测分子量	18kDa
形式	Liquid
保存条件	Store at -20°C. Avoid freeze / thaw cycles. Buffer: PBS with 0.02% sodium azide, 50% glycerol, pH7.3.
偶联物	Unconjugated
阳性对照	A-431, A-549
细胞定位	Nucleus
纯化	Affinity purification

抗原信息

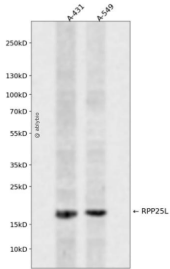
抗原信息	Recombinant fusion protein containing a sequence corresponding to amino acids 1-163 of human RPP25L (NP_680544.1).
序列	MEHYRKAGSVLPPSPMPQLPPDTLEMRVRDGSKIRNLLGLALGRLEGG SARHVVFSGSGRAAGKAVSCAEIVKRRVPG LHQLTKLRF LQTEDSWVPASPDTGLDPLTVRRHVPAVWVLLSRDPLDPNECGYQPPGAPPLGSMPS SSCGPRSRRRAR DTRS

靶点信息

研究背景	This gene encodes a protein that appears to belong to a family of evolutionarily related proteins (DUF78), that may share one or more domains in common. Members of this family are small archaeobacterial proteins with no known function. Alternative splicing has been observed at this locus and two variants, both encoding the same protein, have been identified.
基因ID	138716

基因名	RPP25L
Swiss	Q8N5L8
别名	RPP25L;C9orf23;bA296L22.5

产品验证



Western blot analysis of RPP25L expressed in A-431,A-549 using RPP25L Rabbit pAb at 1:1000. Secondary antibody: HRP Goat Anti-Rabbit IgG (H+L) at 1:5000. Lysates/proteins: 30ug per lane. Blocking buffer: 5% non-fat dry milk in TBST. Detection: ECL Enhanced Kit. Exposure time: 120s.

实验步骤

访问官网浏览详情: www.ablybio.cn