

STRA13 Rabbit pAb

货号: **AYP15714**

产品信息

| | |
|-------|--|
| 反应 | Human |
| 宿主 | Rabbit |
| 克隆性 | Polyclonal |
| 预测反应 | |
| 应用 | WB |
| 推荐浓度 | WB: 1:500 - 1:2000 |
| 理论分子量 | 6kDa/7kDa/8kDa |
| 实测分子量 | 14kDa |
| 形式 | Liquid |
| 保存条件 | Store at -20°C. Avoid freeze / thaw cycles. Buffer: PBS with 0.02% sodium azide,50% glycerol,pH7.3. |
| 偶联物 | Unconjugated |
| 阳性对照 | H460 |
| 细胞定位 | Chromosome,Nucleus,centromere,kinetochore |
| 纯化 | Affinity purification |

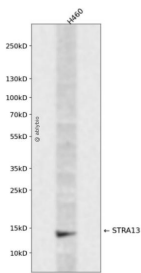
抗原信息

| | |
|------|---|
| 抗原信息 | Recombinant fusion protein containing a sequence corresponding to amino acids 1-63 of human STRA13 (NP_659435.2). |
| 序列 | MEGAGAGSGFRKELVSRLHLHFKDDKTKEAAVRGVRQAQAEDALRVDVDQLEKVLPLQLLDF |

靶点信息

| | |
|-------|--|
| 研究背景 | DNA-binding component of the Fanconi anemia (FA core complex. Required for the normal activation of the FA pathway, leading to monoubiquitination of the FANCI-FANCD2 complex in response to DNA damage, cellular resistance to DNA cross-linking drugs, and prevention of chromosomal breakage. In complex with CENPS (MHF heterodimer, crucial cofactor for FANCM in both binding and ATP-dependent remodeling of DNA. Stabilizes FANCM. In complex with CENPS and FANCM (but not other FANCD proteins, rapidly recruited to blocked forks and promotes gene conversion at blocked replication forks. In complex with CENPS, CENPT and CENPW (CENP-T-W-S-X heterotetramer, involved in the formation of a functional kinetochore outer plate, which is essential for kinetochore-microtubule attachment and faithful mitotic progression. As a component of MHF and CENP-T-W-S-X complexes, binds DNA and bends it to form a nucleosome-like structure. DNA-binding function is fulfilled in the presence of CENPS, with the following preference for DNA substrates: Holliday junction > double-stranded > splay arm > single-stranded. Does not bind DNA on its own. |
| 基因ID | 201254 |
| 基因名 | CENPX |
| Swiss | A8MT69 |
| 别名 | CENPX;CENP-X;D9;FAAP10;MHF2;STRA13 |

产品验证



Western blot analysis of STRA13 expressed in H460 using STRA13 Rabbit pAb at 1:1000. Secondary antibody: HRP Goat Anti-Rabbit IgG (H+L) at 1:5000. Lysates/proteins: 30ug per lane. Blocking buffer: 5% non-fat dry milk in TBST. Detection: ECL Enhanced Kit. Exposure time: 120s.

实验步骤

访问官网浏览详情: www.ablybio.cn