

BST1 Rabbit pAb

货号: **AYP15713**

产品信息

反应	Human,Mouse
宿主	Rabbit
克隆性	Polyclonal
预测反应	
应用	WB IF/ICC
推荐浓度	WB: 1:500 - 1:2000 IF/ICC: 1:50 - 1:200
理论分子量	29kDa/35kDa
实测分子量	30kDa
形式	Liquid
保存条件	Store at -20°C. Avoid freeze / thaw cycles. Buffer: PBS with 0.02% sodium azide,50% glycerol,pH7.3.
偶联物	Unconjugated
阳性对照	Mouse lung
细胞定位	Cell membrane,GPI-anchor,Lipid-anchor
纯化	Affinity purification

抗原信息

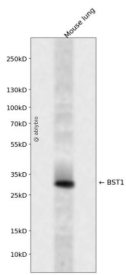
抗原信息	Recombinant fusion protein containing a sequence corresponding to amino acids 29-293 of human BST1 (NP_004325.2).
序列	GARARWRGEGTSAHLRDIFLGRCAEYRALLSPEQRNKNCTAIWEAFKVALDKDPCSVLPSDYDLFINLSRHSIPRDKSLFW ENSHLLVNSFADNTRRFMPLSDVLYGRVADFLSWCRQKNDSGLDYQSCPTSEDCENNPVDSFWKRASIQYKSDSSGVI HVMLNGSEPTGAYPIKGFADYEIPNLQKEKITRIEIVWMHEIGGPNVESCGEKSMKVLKRLKDMGFQYSCINDYRPVKLL QCVDHSTHPDCALKSAAAATQRKA

靶点信息

研究背景	Bone marrow stromal cell antigen-1 is a stromal cell line-derived glycosylphosphatidylinositol-anchored molecule that facilitates pre-B-cell growth. The deduced amino acid sequence exhibits 33% similarity with CD38. BST1 expression is enhanced in bone marrow stromal cell lines derived from patients with rheumatoid arthritis. The polyclonal B-cell abnormalities in rheumatoid arthritis may be, at least in part, attributed to BST1 overexpression in the stromal cell population.
------	--

基因ID	683
基因名	BST1
Swiss	Q10588
别名	BST1;CD157

产品验证



Western blot analysis of BST1 expressed in Mouse lung using BST1 Rabbit pAb at 1:1000. Secondary antibody: HRP Goat Anti-Rabbit IgG (H+L) at 1:5000. Lysates/proteins: 30ug per lane. Blocking buffer: 5% non-fat dry milk in TBST. Detection: ECL Enhanced Kit. Exposure time: 120s.

实验步骤

访问官网浏览详情: www.ablybio.cn