

ATP1B2 Rabbit pAb

货号: **AYP15710**

产品信息

反应	Human,Mouse,Rat
宿主	Rabbit
克隆性	Polyclonal
预测反应	
应用	WB IF/ICC
推荐浓度	WB: 1:500 - 1:2000 IF/ICC: 1:50 - 1:200
理论分子量	33kDa
实测分子量	42kDa
形式	Liquid
保存条件	Store at -20°C. Avoid freeze / thaw cycles. Buffer: PBS with 0.02% sodium azide,50% glycerol,pH7.3.
偶联物	Unconjugated
阳性对照	HepG2,NCI-H460,SH-SY5Y
细胞定位	Cell membrane,Single-pass type II membrane protein
纯化	Affinity purification

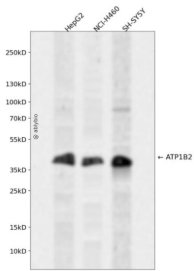
抗原信息

抗原信息	Recombinant fusion protein containing a sequence corresponding to amino acids 68-290 of human ATP1B 2 (NP_001669.3).
序列	DHTPKYQDRLATPGLMIRPKTENLDVIVNVSDTESWDQHVQKLNKFLPEYNDSIQAQKNDVCRPGRYEYQPDNGVLNYP KRACQFNRTQLGNCSGIGDSTHYGYSTGQPCVFIKMNRVINFYAGANQSMNVTCAGKRDEDAENLGNFVMFPANGNIDL MYFPYYGKKFHVNYTQPLVAVKFLNVTPNVEVNVECRINAANIATDDDERDKFAGRVAFLRINKT

靶点信息

研究背景	The protein encoded by this gene belongs to the family of Na ⁺ /K ⁺ and H ⁺ /K ⁺ ATPases beta chain proteins, and to the subfamily of Na ⁺ /K ⁺ -ATPases. Na ⁺ /K ⁺ -ATPase is an integral membrane protein responsible for establishing and maintaining the electrochemical gradients of Na and K ions across the plasma membrane. These gradients are essential for osmoregulation, for sodium-coupled transport of a variety of organic and inorganic molecules, and for electrical excitability of nerve and muscle. This enzyme is composed of two subunits, a large catalytic subunit (alpha) and a smaller glycoprotein subunit (beta). The beta subunit regulates, through assembly of alpha/beta heterodimers, the number of sodium pumps transported to the plasma membrane. The glycoprotein subunit of Na ⁺ /K ⁺ -ATPase is encoded by multiple genes. This gene encodes a beta 2 subunit. Two transcript variants encoding different isoforms have been found for this gene.
基因ID	482
基因名	ATP1B2
Swiss	P14415
别名	ATP1B2;AMOG

产品验证



Western blot analysis of ATP1B2 expressed in HepG2, NCI-H460, SH-SY5Y using ATP1B2 Rabbit pAb at 1:1000. Secondary antibody: HRP Goat Anti-Rabbit IgG (H+L) at 1:5000. Lysates/proteins: 30ug per lane. Blocking buffer: 5% non-fat dry milk in TBST. Detection: ECL Enhanced Kit. Exposure time: 120s.

实验步骤

访问官网浏览详情: www.ablybio.cn