

AMT Rabbit pAb

货号: **AYP15709**

产品信息

反应	Human,Mouse,Rat
宿主	Rabbit
克隆性	Polyclonal
预测反应	
应用	WB IHC IF/ICC
推荐浓度	WB: 1:500 - 1:2000 IHC: 1:50 - 1:200 IF/ICC: 1:50 - 1:200
理论分子量	37kDa/39kDa/41kDa/43kDa
实测分子量	44kDa
形式	Liquid
保存条件	Store at -20°C. Avoid freeze / thaw cycles. Buffer: PBS with 0.02% sodium azide,50% glycerol,pH7.3.
偶联物	Unconjugated
阳性对照	LO2,SW620,22Rv1,Mouse pancreas,Mouse brain,Rat liver
细胞定位	Mitochondrion
纯化	Affinity purification

抗原信息

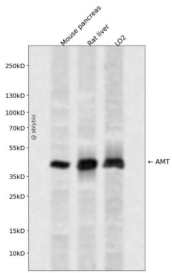
抗原信息	Recombinant fusion protein containing a sequence corresponding to amino acids 107-386 of human AMT (NP_001158184.1).
序列	AELRPNQGTLSLFTNEAGGILDDLIVTNTSEGHLYVVSNAGCWEKDLALMQDKVRELQNQGRDVGLEVLNALLALQGPTAAQVLQAGVADDLRKLPMFMTSAVMEVFGVSGCRVTRCGYTGEDGVEISVPVAGAVHLATAILKNPEVKLAGLAARDSLRL EAGLCLYGNDIDEHTTPVEGSLSWTLGKRRRAAMDFPGAKVIVPQLKGRVQRRRVGLMCEGAPMRAHSPILNMEGTKIGT VTSGCPSPLKKNVAMGYVPCEYSRPGTMLLVELPSGPCF

靶点信息

研究背景	This gene encodes one of four critical components of the glycine cleavage system. Mutations in this gene have been associated with glycine encephalopathy. Multiple transcript variants encoding different isoforms have been found for this gene.
------	--

基因ID	275
基因名	AMT
Swiss	P48728
别名	AMT;GCE;GCST;GCVT;NKH

产品验证



Western blot analysis of AMT expressed in Mouse pancreas,Rat liver,LO2 using AMT Rabbit pAb at 1:1000. Secondary antibody: HRP Goat Anti-Rabbit IgG (H+L) at 1:5000. Lysates/proteins: 30ug per lane. Blocking buffer: 5% non-fat dry milk in TBST. Detection: ECL Enhanced Kit. Exposure time: 120s.

实验步骤

访问官网浏览详情: www.ablybio.cn